

Window on Walton



St.
PETER'S CHURCH
WALTON ON THE HILL

Jun - Jul
2026



• Parish News • Community • Local Events • Clubs & Groups

<https://www.stpeterswoth.org>

 [stpeterschurchwoth](#)  [st-peters-church-walton-on-the-hill](#)

St Peter's Team



Rector
Rev'd Harry Latham
01737 812105
rector@hilltopbenefice.org



Benefice Curate
Karen Wheatley
karen@hilltopbenefice.org
07493 195674



Churchwarden
Know someone who could help? Please do get in touch.



Organist
Jenny Tuttle
07733107672
tuttle.jenny@gmail.com



Churchyard Manager
Neil Williams
01737 813648
n.williams142@btinternet.com



Safeguarding Officer
Anne Edwards
07920484869
SafeguardingWalton@hilltopbenefice.org



Pastoral Assistant
Karen Rand
karenrand@gmail.com



Treasurer
Chrissie James, 07801 530222
chrissiej10@gmail.com



Magazine Editor
Olivia Rowntree
magazine@stpeterswoth.org
01737 668 254



Parish Administrator
Nicola Glass
admin@stpeterswoth.org
01737 668 254
(Tues & Thurs 9:30am-12:30pm)

If you enjoy reading Window on Walton, sign up and have it hand delivered to your door, six times per year for just £12. You can also contribute to future editions or advertise with us. For more details contact our editor magazine@stpeterswoth.org



Colour Ad Size

- Full Page
- Half Page
- Quarter Page

Price / Annum

- £180
- £100
- £80



All views expressed are those of the individual authors and are not necessarily those of St Peter's. While we strive for originality, contributors are responsible for ensuring they have the right to share any text or images submitted. All original content remains the copyright of the respective author/artist. If you believe any material infringes upon your copyright, please contact the Editor immediately so we can address the concern.

Rector's Letter

Rev'd Harry Latham

In June and July we continue our new pattern of services. We alternate our 11am services with St Mary's 10.30am services on 2nd Sundays and we travel to St Mary's at 8am on 4th Sundays.

We also will be living in the wake of Pentecost. "Wait for the gift my Father promised." Jesus had said. "Stay in the city until you have been clothed with power from on high." He had spoken of "baptism" with the Holy Spirit, he had said it was for their "benefit" he was going away, he had said he would not leave them "as orphans" but would come to them somehow... and on that day they would realise that He was in the Father, and that they were in him and that he was in them!

These were the disciples, with Matthias who replaced Judas, with others including the women who followed and Mary the mother of Jesus and his brothers... we are told about 120 of them in all... watching and waiting and watching and waiting until the Day of Pentecost came.

Pentecost was a Jewish celebration with a range of different names occurring 50 days after Passover that was something of a harvest festival. Certainly Jerusalem was filled with pilgrims who had come to give thanks.

The arrival of the Holy Spirit amongst the disciples was marked by a sound of a mighty wind, the sight of what seemed to be flames of fire and the gift of speaking in different languages.

So it was then that Jesus' promise was fulfilled and the waiting was over for the disciples and all the People get to hear the good news of Jesus in their mother tongues.

I think it is hard for English speakers in their own land to realise the value of hearing in the first language we ever learnt. The disciples could have spoken in Greek, and most of the crowd would have understood... but it would not have touched their hearts in the same way.

Rector's Letter cont.

Rev'd Harry Latham

Jesus' Promise fulfilled, all the people get to hear, and Peter gets to explain and preach. His words give a clear context looking forward for the people in Jerusalem and just as much for the people of the world today.

It is a context of all of us being called to account, it is of Jesus returning as Judge and bringing both reward and punishment.

So we hear these wonderful words, that "everyone who calls on the name of the Lord will be saved." Utterly inclusive, treating everyone the same God's arms are stretched out to the world as Jesus' arms were stretched out on the Cross asking that we take the lifeline, the salvation he has provided for us.

Peter goes on to preach about Jesus and says: "Let all the house of Israel therefore know for certain that God has made him both Lord and Christ, this Jesus whom you crucified." And the crowd we are told: "were cut to the heart, and said to Peter and the rest of the apostles, "Brothers, what shall we do?" and 3000 were added to the Church.

So what for us following Pentecost 2026? Let us open ourselves afresh to the Holy Spirit. Let us take to heart God's desire for all people to hear about Jesus. Let us agree to speak about Jesus to other people whenever we can and especially as God gives us glorious opportunities!

Very best wishes, Harry



**THE
BRIDGE**
RESTAURANT & BAR
Mediterranean Cuisine

**10% off on Sunday lunch for
all at St Peter's Church and
Friends**
KT20 5SP – TADWORTH

Pentecost Prayer

by John Birch

When was the last time
that we heard the wind of your Spirit
roar through this place?
When was the last time
your fire lit up this room?
When was the last time
we took you at your word
and met together in expectation
of your Spirit filling this place,
and these lives with your Glory and
Power?
Lord, you challenge us with
Pentecost.
Do we believe that this
was a once in eternity experience,
never to be repeated?

That the Holy Spirit was poured out
on your followers for a single purpose,
and ended His work at that instant?
If so, then maybe that is why the
Church seems so powerless in this
age,
helpless when faced with the needs
both spiritual and physical,
that we see in the world.
Lord, as we meet together ,
and celebrate once again
the memory of that first Pentecost,
may it be for us as it was then
a moment of empowerment,
an awareness of your Glory in this
dark world, a life changing experience.

Wanted Part-time paid Children & Families worker

For details and
more information

Please contact Nicola
admin@stpeterswoth.org



Notices



MUSIC SUNDAY
14th June at 10.30am

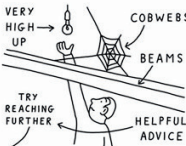
at St Mary's Church, Headley
featuring the Community Choir
(communion will be available at 8am)




**Churchwarden
very much
needed**

*Please talk
to Harry*

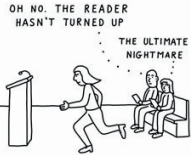
CHURCHWARDEN OF THE YEAR
HOW THE COMPETITION IS DECIDED




ROUND ONE: LIGHT-BULB CHALLENGE




ROUND TWO: FACULTY-REGULATIONS EXAM




ROUND THREE: EMERGENCY LESSON - READING



ROUND FOUR: KEEPING ORDER IN THE CHURCHYARD



SEMI-FINAL: ABILITY TO WITHSTAND THE MIGHT OF HERITAGE ORGANISATIONS



FINAL: STAVE-TWIRLING

Coffee & Conversation

by Rev'd Karen Wheatley

Coffee and Conversation meets at St Peter's Church on the last Wednesday of the month at 10:30am. It's a great opportunity to meet and make friends, along with a cuppa - and all are welcome.

Over the Autumn and Spring terms we have included a few minutes in our get-togethers to reflect on a series of well-loved prayers. These have included the Serenity Prayer, the Prayer of St Francis of Assisi and the Lord's Prayer. But there's time for a laugh too, as we usually also have a light-hearted quiz all together.

The Summer term promises much of the same, although rather than prayers, our reflections for the summer will be on well-known art that has nurtured people's faith.

Coffee and Conversation is open to all, and we'd love to welcome you, especially if you've not been along before, or not for a while.

Upcoming dates:

24th June

29th July



Coffee & Conversation with Art We Love

Meet friends and make friends over a cuppa - including a hymn and a short reflection on a work of art.

Last Wednesday of the month, 10.30-12 at St Peter's Church, Walton-on-the-Hill.

Wed 29th April - Catacombs

Wed 27th May - Sistine Chapel

Wed 24th June - Two Crowns

Wed 29th July - St John of the Cross



For more info, contact:
karen@hilltopbenefice.org

by Karen Rand, Lucasta Grayson and Anne Edwards



Mothers and Others meet at St Peter's on the **second Tuesday** of each month.

On **18th June Tadworth & Walton MUs** will be joining forces for a "bring and share supper and social evening" with a quiz and a raffle, starting at **6pm**.

Mothers' Union is celebrating its **150th anniversary**, with special services, events, and challenges bringing members together in faith and fellowship.

Britain & Ireland Anniversary Events

150th Celebratory Service – St Paul's Cathedral, London. 10 June at 5:00pm.

Annual Gathering – The Emmanuel Centre (next to Mary Sumner House) 11 June, 10:30am – 4:30pm.



I'm collecting spare change for the Mothers' Union 150th Fundraising Challenge, helping families around the world to thrive.

Every coin counts. Every gift brings hope.

Together we're lighting the way for generations to come.



Bring along your loose change and look out for our jam jars at St Peter's!

Mothers and Uthers Easter Fun Afternoon

The Easter Fun afternoon run by Mothers and Uthers at St Peter's has become an annual event. On March 31st, upwards of sixty children with their parents, grandparents and carers joined in the activities in Walton's village school's playing field in Breech Lane.

There were craft activities, ball games and of course an Easter egg hunt. MU members supplied cakes, biscuits, hot cross buns and drinks and indeed fun was had by all.

We were helped by some warm weather and by the efforts of Lola and Rose and their grandparents in clearing up the pavilion.

Once again generous donations raised £166.00 toward MU's fundraising for women's charities in the UK and the developing world. Our thanks also go to Walton on the Hill Primary School for making the field and pavilion available to us.



BAKE SALE

Sunday 7th June

at the 8am and 11am services at St Peter's.



150 YEARS OF
Mothers' **UNION**
Join us, Join in

Money raised will help to support families,
women facing violence and communities in poverty.

Mothers' Union Spring Walk

by Karen Rand, Lucasta Grayson and Anne Edwards



Spring has sprung!

MU members enjoyed their annual spring walk, followed by a lovely and well-deserved lunch.



What a difference a day makes.....

Just when you think the weather is calming down and warming up... then arrives the hail storm of all hail storms the very next day!



Mothers' Union

Prayer Diary

June Reflection

In June we have the climax of our 150th year. At the heart of our celebration is the opportunity to give our joyful thanks and praise to God for His love – especially for giving us His only Son, for faithfulness, guidance and provision for all past and present members. We will be worshipping together at our service in St Paul's Cathedral and our Annual Gathering in the Emmanuel Centre. We thank God too during June for parents, the courage of refugees, Pentecost Ordinations and commitment to awareness raising for ending plastic pollution. 'Come on and celebrate, celebrate and sing to our King!'

June Monthly Prayer

Father God, we join in and celebrate your love to us through Mothers' Union. We praise you for the past 150 years, for the vision of Mary Sumner and for all who have followed her, praying and serving in Your name. We delight in all Your gifts to us, the joy of family, the wonders of Your creation, the fellowship of our fellow members and, most of all, Your love to us through the gift of Your son, Jesus Christ. May we always walk in Your footsteps. Give us the strength to be different, to stand up for justice and peace, and be a sign of Your reconciling love for all. We ask this in your name. Amen.

July Reflection

Jesus tells us to go and make disciples of all nations. At this time of year, we seem to have more time to do things, but do we have the courage to witness to our faith with pride, showing respect for others while remaining steadfast to our calling? St. Francis of Assisi said, 'Go out to preach the Gospel, and only if necessary should we use words.' Mothers' Union was founded on faith; it continues to be built on faith by lives lived in faith for the future of our faith. Let us share this rich faith generously.

July Monthly Prayer

Heavenly Father, we thank you for the gift of faith that we have received from you. Please help us to know more deeply for ourselves the transforming power of the Gospel in our own lives. As we draw encouragement from your gracious gift to us, give us a greater desire to share the Good News with the people we meet, so that they, too, may find hope and may know for themselves the riches of your love. Through your Holy Spirit, may our words and actions bear witness to your presence, through Christ our Lord, Amen.

Open Group & Village Kitchen

Mo Atkins

OPEN GROUP

We are looking forward to the annual '**Sociable Strawberry Soirée**', on **Thursday, 11th June, from 7.00pm**, kindly hosted, once again, by Ros Henderson. As last year, the evening will be shared with MU members. Details will follow by email. If you would like to receive Open Group news, please write to waltonopengroup@gmail.com

At the time of writing, preparations are underway for the serving of refreshments from the Open Group Tea Tent, at the May Pageant. A **huge thank you** to all bakers and helpers!



As well as overseeing the Village Kitchen, recent Open Group contributions to church and village life include providing hot cross buns, with coffee, after the Good Friday service at St Peter's, and facilitating the community Choir Cabaret evening at the Riddell Hall.

Sunday, 9th August will see us serving 'Teas in the Churchyard', with Friends of St Peter's in celebration of their 10th Anniversary. Do come along for a cuppa!



VILLAGE KITCHEN

The next Village Kitchens will be held, in the Riddell Hall on Saturdays, 12noon - 1.30pm on:

13th June

11th July

All are welcome!

PLEASE NOTE that there will be no Village Kitchen, in August. Instead, there will be an opportunity to help celebrate the **10th Anniversary of Friends of St. Peter's**.



Come and enjoy 'Teas in the Churchyard', on the usual Village Kitchen weekend, but on the **SUNDAY 9th AUGUST, 2.30 - 5.00pm**. Tea will served in church if weather is inclement.

Parish Giving



St.
PETER'S CHURCH
WALTON ON THE HILL

Thank you for financially supporting St Peter's Church

Please review how much you can give

Please consider planned giving

Please explore the Parish Giving Scheme



<https://www.parishgiving.org.uk/donors/find-your-parish/walton-on-the-hill-st-peter-tadworth>

- ⇒ Follow the above link (Or look out for email with link)
- ⇒ select the option that says **Regular Giving**
- ⇒ follow the instructions to fill in the form.



Parish Giving



Benefits of the Parish Giving Scheme (PGS)

This secure and simple method of giving serves givers and churches.

The giver benefits from:

- ◇ Retaining control of how much they give, how often and to which church
- ◇ Using a simple method of regular financial support to their church
- ◇ The option to increase giving annually to protect their gift against inflation
- ◇ Anonymity, if preferred
- ◇ Peace of mind that the Direct Debit Guarantee Scheme

The treasurer benefits from:

- ◇ Reduced administration and paperwork
- ◇ Easy access to monthly and annual statements

The church benefits from:

- ◇ Stable and often increased planned giving
- ◇ Efficient and regular reclaim of Gift Aid

The administrative cost of operating the scheme is covered by each member diocese, making the service free to use for churches and givers.

GoCardless Ltd (company registration number 07495895) is authorised by the Financial Conduct Authority under the Payment Services Regulations 2017, registration number 597190, for the provision of payment services.

As a charity whose origins are within the Church, PGS is dedicated to serving givers and churches in a shared ministry of giving. Every pound donated through PGS can be put to Christian service in the local community, free from time-consuming admin.

Thank you to....

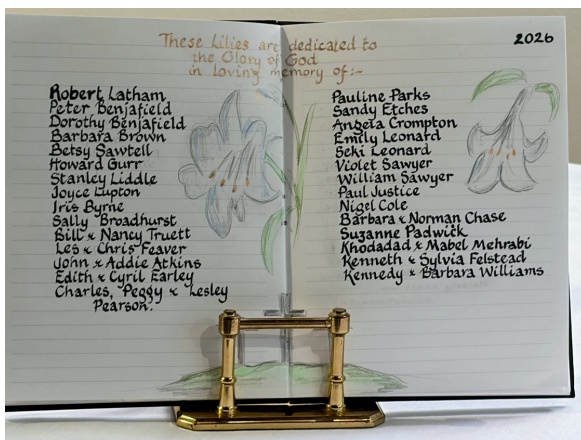


Easter Lillies

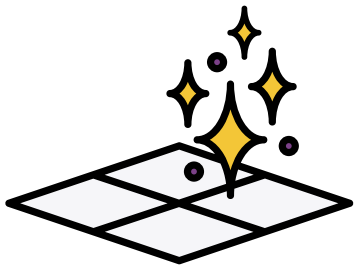
Many thanks to **Penelope Dring**, for once again organising the glorious **Easter lillies**, purchased in memory of loved ones.

Book of Remembrance

We are extremely grateful also to **Sylvia Williams** for her beautiful inscriptions, in the accompanying **Remembrance Book**.



Gleaming floor tiles!



A big thank you to **Jamie Powell** who has very kindly cleaned and polished the floor tiles at St Peter's - they have never looked so sparkly!

For the diary.....



Friday Coffee

St Mary's
Octagon
Headley
10.30am

Prayer & Pastries

9.15am

Fridays, in Term Time

St Andrew's Boxhill

All Welcome



TWOAT

Mike Fox

TWOAT benefitted to the tune of £1000 recently from two events held in Kingswood Village Hall - an excellent result for us. At the most recent event, Anna Howie an international singing star, volunteered her time generously, taking part in what was a very enjoyable country music evening. Many thanks to our Kingswood supporters for organising these events.

I am also delighted to report that our annual street collection in Tadworth, Walton & Kingswood raised a further £500. Again many thanks to those supporters collecting for us and to those who donated.

We had a recent video conference with one of the farmers and beneficiaries of our tree planting project in Malawi. The price of fertiliser is now a big issue worldwide for farmers. The farmer we spoke to and the project are promoting the use of composting for the leaves of certain trees which can be a good and free alternative to fertilisers. He told us that many farmers in Malawi are not familiar with the approach of allowing leaves and vegetable matter to rot whilst being combined with soil as they have become too reliant on chemical fertilisers.

A daughter of Kingswood residents with a Kenyan background, who has started a successful textile business in Kenya, has also created two charitable initiatives to help women and girls. TWOAT has donated £500 to each of these. One in particular, called the Stitching Academy, is also supported by her textile business and is giving participants opportunities to learn skills which will help them to develop careers of their own.

One of the more important activities of projects we support in Africa is ensuring there are adequate supplies of water. We have been supporting a project in Berega, Tanzania to identify sources of underground water for use by the hospital and orphanage, and we have recently received photos from the Subutini School project, also in Tanzania, showing how some of our funds have been used to repair and maintain the large tank they use to retain rainwater.



TWOAT cont.

Mike Fox

News from Les Petits Saphirs

We've recently heard from our friends, Laurette and Danielle Totomarovario in Madagascar about Les Petits Saphirs school which we support in Ambondromifehy.

The children are focussing on exams, and Laurette is dealing with the sudden departure of a new teacher, caused in part by the worsening financial situation in the country. The poorer countries in the world are suffering more than we are from the effects of the wars in Ukraine and the Gulf.

I'm pleased to share with you a copy of the letter from Laurette and Danielle. *"At the moment, we are preparing the children for a mock national exam coming on next week. They are 13 candidates to sit for the final primary exam in June.*

The bad news is that the last teacher I hired last year, at the time we had to enrol so many kids, left us last month suddenly for a "gold rush" somewhere in the region. The problem is that he disappeared immediately after Easter break without any notice. The other teachers now have to get organised, to take his class as we can't hire a new

teacher just now. We have hired a lady to help in the canteen, so that the lady who normally runs the canteen could take a class, as she is a teacher herself!

The fact is that the cost of living is getting higher everyday and parents with children can hardly make ends meet. The situation is actually harder than we had expected it after the young people's rebellion and the last president's departure. On top of that, the whole global economic situation has terrible effects on our every day living conditions. While we are desperately looking for better conditions day after day, the government seems to be struggling to set up a new government structure to make a definit change from the past.

Unfortunately, as a result of this, the population feels somehow left aside with daily poor living conditions, waiting for the goverment to turn to us and react in our favour... Apart from that, all is well .

The last transfer of TWOAT money for this school year can therefore wait until end of June. Thank you for that.

Since last year I have been thinking of building another classroom to cope with the additional students, or at least start

TWOAT cont.

Mike Fox

the foundation work with what we have, but it is better to wait until children are on holiday to avoid the mess.

The students in Aix-en-Provence have raised funds last January and had promised to contribute to the building of a new classroom for LPS. but so far we haven't heard from them. Our friend Peter Prince will tell us when there is more news about it .

This year, the local Trinity Church has made progress: there is now a choir group from the teachers of LPS and another choir group from LPS children of non christian families. The children sang a lively song to illustrate Christ Jesus 's action on His way to Jerusalem to celebrate Palm Sunday!

Love from Laurette and Danielle.”

Get involved!

By the time you read this article the first of our John Allinson Memorial Sponsored Walks will have taken place but it is still not too late to join or sponsor the second walk on Saturday June 6th over Reigate Heath.

The 5-mile route is planned to allow those who wish to do so to have lunch at the Skimmington Castle pub on Bonny Road.

If you are interested, please contact our walk organiser Dick Shelley for details on 01737 817930. The matched funding for sponsors we have been promised applies to both walks so please visit our web site to see how you can sponsor someone or just donate online at our special walk page <https://cafdonate.cafonline.org/30273> .

Please visit the TWOAT web site www.TWOAT.org to learn more about our activities or to donate if you can.

Many thanks for your support,

Mike Fox, Chair TWOAT 01737 350452

Community Choir Cabaret

Mo Atkins

Walton on the Hill was treated to a wonderful occasion, on 9th May. The Riddell Hall was packed to capacity for the Hilltop Choir's first 'Cabaret Evening' ... and what a success it was!

Under the leadership of musical director, Esther Jones, and accompanied by her very own 'Crutch Family Band' the choir presented songs from a variety of shows, interspersed with entertaining recitals of Pam Ayres' poetry, by Elizabeth Ayres (no relation!) and Richard Pearce, and performances by Robin and Lucy Hunter. Lucy's rendition of Joyce Grenfell's monologue 'Committee', portraying a chaotic meeting of a Ladies' Choral Society discussing how to handle a tone-deaf member, being particularly apt (clearly not The Hilltop Choir)!



Robin Hunter as Rambling Sid Rumpo!

1960s' memories of radio's 'Round the Horne' were awakened when Robin took to the stage as 'Rambling Syd Rumpo' and performed the suggestive, 'Song of the Australian outlaw'!

The hall was decorated to evoke a cabaret atmosphere, with drinks available at the bar in the interval.

Several folk were heard to remark that the evening had been a welcome oasis, amidst the turmoil of the wider world.

An amazing £2,000 was raised, shared equally between the Choir and Friends of St Peter's.



Friends of St. Peter's

Mo Atkins

We were very sorry to have said a recent farewell to Victoria (Tori) Truett, as Trustee. Tori has given great service to Friends and was presented with flowers and a gift of thanks, at her last committee meeting, in April.

We are very pleased that Mike Bawden, Susie Grover, Sue Peel and Brian Williams, have joined George Curry, Michele Spink and Mo Atkins as trustees.

'Friends' are extremely grateful to the Hilltop Community Choir for generously sharing the proceeds of their Cabaret Evening, on 8th May. (See separate write-up)

This year 'Friends' celebrates its 10th Anniversary! This will be marked by a special **'TEAS IN THE CHURCHYARD'** (in church if wet), on SUNDAY, 9th AUGUST, 2.30 - 5.00pm.

Everyone welcome! Proceeds, from donations, to Friends of St. Peter's, for the upkeep and maintenance of the church and churchyard.

A **'Wine Tasting'** is planned for the autumn. Watch this space for further details.



Note from Norma

Norma Darter

I am writing this article on May 1st and it is the most beautiful day, sunny and very warm. What a treat to go out and not have to face cold wind and rain.

Certainly feels that we are slowly getting into springtime, with hedgerows springing into life.

There are plenty of happy events coming up; May Pageant, Village Kitchen, Open Gardens and tea and cake at many local venues. Bill and I try and go out every day, and if we don't take our own tea or coffee it's my aim to find somewhere reasonable.

Coffee and cake on a Saturday morning in The Church of the Good Shepherd, and The Community Centre in Banstead takes some beating! We have enjoyed many a tasty sandwich there at very reasonable prices.

Parishioners are able to enjoy the latest films brought to the Riddell Hall, monthly, courtesy of Barrie Gilbert and Curzon Country Cinema. Many thanks to Barrie for this village treat. He is on a break until September so look out for his posters.

The Food Bank is still requesting donations. Please put any items in the boxes in St Peter's porch and The Riddell Hall and they will be taken to Merland Rise church on a Tuesday.

Christine's cards (proceeds to St Peter's) are still very popular and are also for sale in the church porch. So far £2,465 has been handed in to the church since Christine passed away 10 years ago. Many thanks to everyone who buys them.

Lastly, after my article in the last edition of WoW, Val Griffiths looked through her newspaper cuttings and found that my Auntie Lilian was a bridesmaid at her mum and dad's wedding (Eva and Bill) officiated by Rev G W Borlase and with my Uncle Charlie as best man. A lovely Walton friendship over many years.

Take care and hope we can all enjoy the local summer events.

Norma x

Sunday Service Format at St Peter's, 11am - 12 noon

8:00am - 8:45am 1662 Prayer Book Communion

This is a quiet, traditional and spoken service of communion with a short talk.

11:00am - 12:00pm Main Service

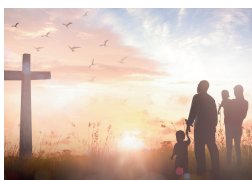
This service is our main service of the day.

Tea & coffee served from 10:30am



1st Sunday - ALL-AGE Service

(with craft activity)



2nd Sunday - BENEFICE COMMUNION Service, alternating with Headley

(traditional)



3rd Sunday - FAMILY Service

(quite lively)



4th Sunday - FAMILY COMMUNION Service

(less traditional)



5th Sunday - UNITED BENEFICE Service

at St Andrew's

Services at St Peter's

June - July

June

- 7th** 8am Holy Communion (1662) & 11am All-Age Service
- 14th** 8am Holy Communion (1662) & 10.30am Music Sunday Service, Headley
- 17th** 10am (Wednesday) Healing Communion, Headley Octagon
- 21st** 8am Holy Communion (1662) & 11am Family Service
- 28th** 8am Holy Communion (1662) St Mary's, Headley & 11am Family Communion

July

- 5th** 8am Holy Communion (1662) & 11am All-Age Service
- 12th** 8am Holy Communion (1662) & 11am United Benefice Communion
- 15th** 10am (Wednesday) Healing Communion, Headley Octagon
- 19th** 8am Holy Communion (1662) & 11am Family Service
- 26th** 8am Holy Communion (1662) St Mary's, Headley & 11am Family Communion

Join us for tea and coffee, served from 10.30am every Sunday - All Welcome

Walton in Bloom

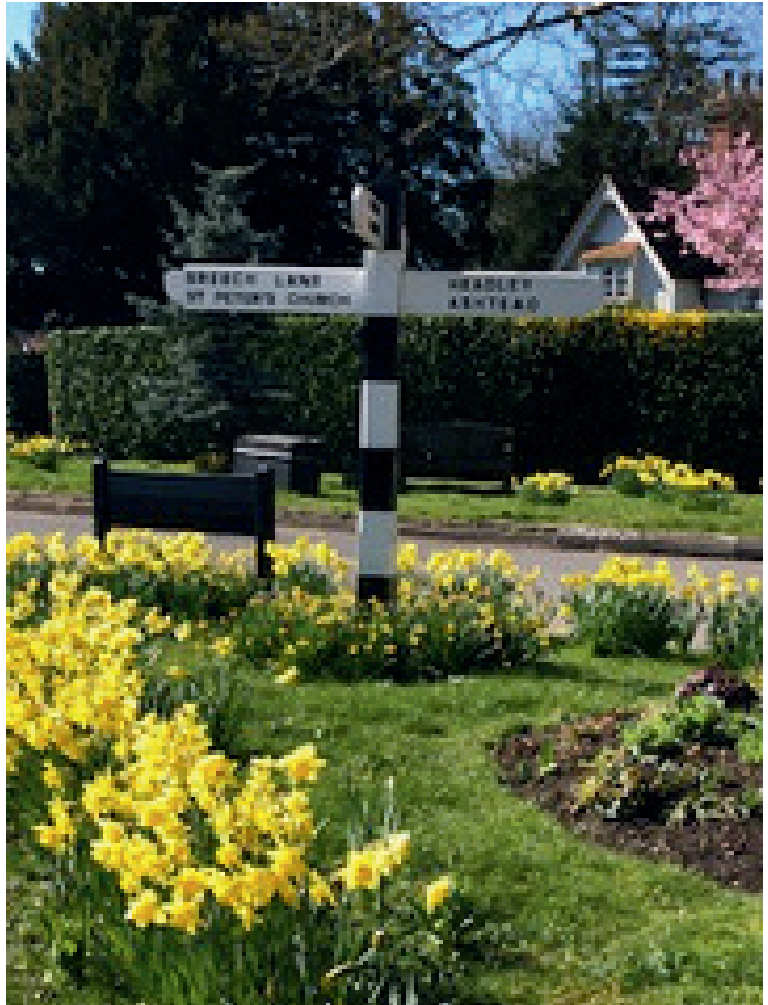
by Jean Bye

Thank you for all your lovely comments on our spectacular Spring display around the village. The tulips, have been superb this year. We will now consider further areas to plant up for 2027.

Thank you to those who have generously donated to our Hanging Basket Appeal this year. No matter how small your donation it will be going a long way, so if you haven't yet donated and would like to do so, here are the details:

Walton Village Forum
Metro Bank
Sort code: 23-05-80
Account No: 57717424

Many thanks.
Walton in Bloom
Volunteers



Childhood, Screens and the Importance of Slowing Down

Richard Laing, Headteacher, Walton Primary

One of the privileges of working in education is having the opportunity to watch children grow – not just academically, but socially, emotionally and developmentally too. Over time, certain patterns begin to emerge. Some are encouraging. Others give pause for thought.

Increasingly, many educators and parents are noticing changes in children's ability to focus, concentrate and sustain attention. Children can find it harder to listen to a story from beginning to end, persist when learning becomes challenging or engage patiently in conversation, problem-solving and real-life interaction. These are not isolated observations, nor are they unique to schools. They reflect wider changes in the world children are growing up in.

Alongside this, research into childhood development continues to grow. Importantly, the discussion is no longer simply about the amount of screen time children have, but the type of screen use they are exposed to. Technology itself is not the enemy.

Watching a film together as a family, video calling grandparents, researching a shared interest or enjoying stories through audiobooks and television can all be valuable experiences. Used thoughtfully, technology can connect, entertain and educate.

However, there is increasing concern around the impact of short-form, fast-paced content – the endless stream of brief, highly stimulating clips designed to capture attention instantly and constantly. This type of media is intentionally compelling. It is quick, colourful and ever-changing. For developing brains, it can be incredibly difficult to disengage from. The challenge is that childhood – and much of life – does not work at this pace.

Learning, relationships and personal growth all require something different:

- listening carefully over time,
- thinking deeply,
- managing frustration or boredom,
- building ideas gradually,
- and developing patience and resilience.

Childhood, Screens and the Importance of Slowing Down

Richard Laing, Headteacher, Walton Primary

These are essential life skills, but they can feel increasingly unfamiliar in a world of constant instant stimulation.

None of this is about blame. Modern life is busy, demanding and often exhausting. Screens can feel like an understandable and sometimes necessary solution – a way to occupy children during hectic days or provide a moment of calm. But perhaps there is value in occasionally stepping back and asking what kind of childhood we want young people to experience. Because childhood was never meant to exist entirely through a screen. It is built through conversation, imagination, outdoor play, shared laughter, stories, mistakes, boredom, creativity and human connection. Often, it is in the quieter moments – the moments without constant entertainment – that children learn to think independently, solve problems and develop curiosity about the world around them.

As a school community, we are reflecting carefully on our role in helping children develop healthy habits and balanced lives.

This is not about rejecting technology, but about ensuring it does not replace the experiences children most need in order to thrive.

Ultimately, this is something schools, families and communities must navigate together. No one gets it perfectly right all the time. But small, thoughtful choices can make a significant difference. Because the experiences we protect in childhood help shape the adults children eventually become – and that is something worth considering carefully.

Mr Richard Laing
Headteacher
Walton on the Hill Primary

May Pageant 2026 In Pictures



May Queen ceremony underway



Elvis - aka Ron Presley



Mayor of Reigate & Banstead, Rick Michalowski and his wife Michelle visit the Open Group tent



The Friends' Posh Bottle Stall - £802 takings



Open Group Tea Tent - cakes at the ready! £830 takings. Huge thanks to all who baked, served and helped in any way.



Barrie Gilbert (of Curzon Country Cinema) with his fairground organ

May Pageant 2026



Winners Walton on the Hill Primary!



Mayor Rick Michalowski and Cllr George Curry



May Queen Florence Brennan with attendants and Harrison, the chimney sweep. As is tradition, there was a special May Pageant service at St Peter's the following day.

Buckland Nurseries Garden Centre

**A25 Reigate Road,
Buckland, RH2 9RE**

01737 242 990

bucklandnurseries.co.uk

Thomas Hogg & Son Ltd est. 1865 ✦



Kingswood, Walton and Tadworth Horticultural Society welcomes you to its annual open garden weekend:

A Gardener's Delight

13 and 14 June 2026

This year, we have one garden in Lower Kingswood opening from 10am - 1pm, with the remainder opening between 2 and 6pm in Tadworth and Walton-on-the-Hill. Teas, cakes and plants are available at some gardens.

Tickets are available on the day at any of the open gardens, and valid all weekend. Adults £7.50 each, children enter free of charge.

Further details of the gardens and when they open are on our website: www.kwthortsoc.co.uk

Getting closer to God's Word with the Bible Course

Whether you have been reading the Bible for decades or have never once turned the pages, it can often seem like a huge, disconnected and unfathomable compilation of ancient texts. Despite what some may say, it's definitely not Harry Potter, and it can be easy to get lost in the details and miss the bigger picture.

Step forward *The Bible Society* who have created *The Bible Course*; an eight-session journey designed to help us see how it all fits together. The Bible isn't just a collection of random stories; it is a single, epic narrative spanning thousands of years. The Bible Course acts as a roadmap, guiding us from Genesis to Revelation. Through high-quality video teaching, interactive group discussions, and personal reflection guides, it breaks down the overarching storyline into manageable, bite-sized chapters.

What makes this course unique is its accessibility. It strips away complex academic jargon and focuses on three core goals:

- **Increase Confidence:** Learn the historical context and cultural background of the text so you can read it with greater understanding.
- **See the Big Picture:** Discover how the Old and New Testaments connect to form one cohesive story centered on Jesus.
- **Apply it Today:** Move from simply knowing information to experiencing transformation in your daily life.

You don't need to be a theologian to understand God's Word. You just need a place to start.

The course is perfect for small groups, entire churches, or individual study. It provides all the necessary tools including comprehensive manuals and streaming videos—to spark meaningful conversation and deeper personal insight.

The Bible Course has been running at St Peter's Church since April. But don't worry if you missed it, you can sign up to the Bible Society's Digital Hub for free and access all the course materials, including videos - give it a go!

<https://www.biblesociety.org.uk/the-bible-course-digital-hub>

Walton Village Forum

Emmeline Moore

During April, we successfully organised the installation of a new defibrillator outside of the Spaghetti Tree restaurant to accommodate those residents residing at this end of the village.

We were very grateful to Central Surrey Community First Responders who have provided the defibrillator and taken on guardianship of it. Our thanks also goes to Patrick Sheehan (Oakley Homes) in conjunction with Matt Kemp (We Wire Electrical Contractors) for facilitating the installation of the defibrillator and to Maria, owner of the Spaghetti Tree, for kindly supplying the electricity to it.

Using a defibrillator can significantly increase the chances of survival during a cardiac arrest. Immediate action is critical, as the likelihood of survival decreases by 10% for every minute that passes without intervention. It is important for defibrillators to be easily accessible in public spaces, they are vital tools in emergency medicine, capable of saving lives by restoring normal heart rhythms during critical situations.

We hope that our residents can now feel assured that our village is sufficiently covered with this new installation as well as defibrillators at Gun Corner, Riddell Hall, Howard Close and Dorking Road football pitches by the golf course.



HILLTOP COMMUNITY CHOIR

HEADLEY | WALTON | BOXHILL



Wednesdays 8-9pm (refreshments from 7.30pm)
St Mary's Church, Headley KT18 6LE
Contact: hilltopcommunitychoir@gmail.com

SINGING | MUSIC | FUN | FRIENDSHIP
beginners welcome - no experience necessary



PROFESSIONALS IN HOME PAINTING



Registered LTD Company
Fully Insured

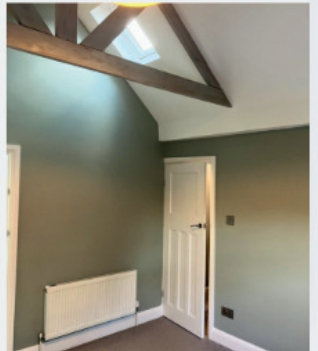
Google Approved

Friendly & Approachable
Flawless 5 Star Reviews

OUR PORTFOLIO

@GOULDDFLT

OUR REVIEWS



YOUR 5 ★★★★★ HOME PAINTING SERVICE -
SEARCH "GOULD D&F" ONLINE.

CONTACT US TODAY

020 80 50 60 03

www.gouldsltd.co.uk

contact@gouldsltd.co.uk

Walton Parochial Charities.

✂ If you live within the parish of Walton on the Hill then the Walton Parochial Charities could help you.

✂ A centuries old fund is in place to help the elderly, sick, disabled, distressed and 'in need'.

✂ If you or anyone you know is struggling financially then please ask them to leave a message in confidence at the St Peter's Church office.

01737668254

admin@stpeterswoth.org



SURREY ACCOUNTANTS

Chartered Certified Accountants



Practising Member of
Cheekaprofessional.com
(Share your expertise online)

- ✓ Specialists in assisting small businesses
- ✓ Conveniently located in Walton on the Hill
- ✓ FREE consultation

Grive House, 45 Walton Street,
Walton on the Hill, Surrey, KT20 7RR

TEL: 01737 813 000

WEB: www.surrey-accountants.co.uk

News from TWRA

Mike Fox

I am writing this report just after the local elections for the new East Surrey Council (ESC) have taken place. As you will know from previous TWRA reports we have been very actively consulting with residents and feeding back their views on the formation of a new Parish Council in the North of the current borough of Reigate & Banstead.

The majority opinion arising from our consultations was that it would be beneficial to provide a locally focused democratic interface with the new ESC whose concerns would span almost half of the existing county of Surrey.

Unfortunately, whilst the existing R&B Borough Council passed a motion in favour of creating the proposed Parish Council, due to an administrative mix up it had already lost the power to actually create one so this would be up to the newly elected East Surrey Councillors. In view of this, TWRA wrote to all the candidates in the recent election to solicit and publish their views on the formation of the Parish Council. These views were published on our web site and in an email bulletin.

Both candidates elected as councillors for our ward were amongst those who had declared themselves in favour of a new Parish Council as were the Liberal Democrats, whose candidates were not elected locally but whose other councillors will have a majority on ESC.

Thus things are looking bright for the prospect of a new Parish Council and TWRA will continue to consult with residents and represent their views as to what sort of activities a new Parish Council covering our area should address.

Please use the contact form on the TWRA web site if you have opinions on that topic.

Distribution of the TWRA Tribune Magazine has been taking place since the beginning of May. If you have not already received a copy please use the contact form on the TWRA web site www.TWRA.org.uk to notify us.

It is a major exercise to deliver over 3000 copies to every household in Tadworth & Walton and we are always interested in obtaining additional volunteers. Please contact Mike if you would be willing to get involved.

Walking in the summer near Walton on the Hill

by Sam Fountain

A summer walk through the Surrey Hills offers more than just fresh air—it provides a gentle reset for both body and spirit. As sunlight filters through ancient woodlands and wildflowers bloom along winding paths, the landscape invites quiet reflection and a deeper sense of peace.



A summer walk through the Surrey Hills offers more than just fresh air—it provides a gentle reset for both body and spirit. As sunlight filters through ancient woodlands and wildflowers bloom along winding paths, the landscape invites quiet reflection and a deeper sense of peace.

Whether you walk from St Peter's down Ebbisham Lane and towards the soldiers, or across towards the golf course, you'll be treated to a different wild flower each month. The colours lie like blankets across the fields. Even teenagers love the back drop for their Instagram and Snap photos!

Walking in this beautiful corner of the countryside encourages us to slow down. Away from the noise and pace of daily life, there is space to notice the simple gifts of creation:

birdsong in the evening is almost deafening at this time of the year, it's amazing. These moments can become opportunities for prayer and walking is a meditation in itself.

As we are forced to focus on each step when we are walking off the pavement, we can only focus on that one action, and so our brains are rested from their daily chatter.

Physically, walking is one of the most accessible ways to care for our health. Gentle exercise improves heart health, strengthens muscles, and boosts overall wellbeing. Mentally, time spent outdoors has been shown to reduce stress and lift mood—something many of us need more of in our busy lives. Rigorous walks are also great to maintain strength in our bones, build balance, and flexibility if we must climb over a stile or two!

Walking in the summer near Walton on the Hill

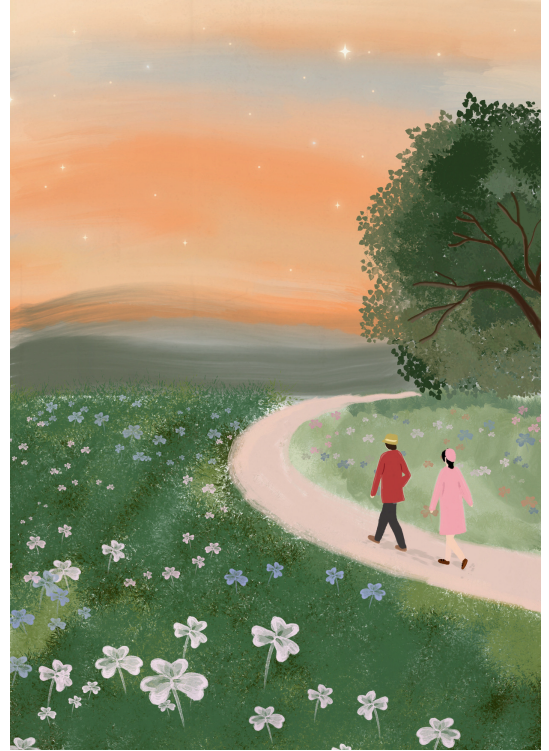
by Sam Fountain

For church communities, group walks can also strengthen fellowship. Sharing conversation along a trail or pausing together to admire a view fosters connection in a relaxed, welcoming way, such as Lucasta's walk in May.

This summer, whether you walk alone with friends, or if you would like to build a new hobby and enjoy where we live, walk - don't take it for granted that you can. If you don't 'use it - you'll lose it' (the ability). If you feel tired sat at home or at your desk, sad or overwhelmed with life- start with a walk. You'll sleep better and feel better.

The Rascal Club organises a gentle one hour 'walk & talk' every Monday at 7pm - departing from near the church. It's free! All ages & dogs on leads are welcome to join, just whatsapp Sam in advance so we know you are coming! 07979299851

By Sam Fountain, The Rascal Club CIC



BREECH LANE COMMUNITY CENTRE

run by Walton on the Hill Association

Large hall with polished wooden floor, kitchen & toilet facilities, car park with ample parking

Mon - Ladies Yoga 7.30-8.30
Wed - Art Group 1.30-4.30
Wed - Exercise class 6.30-7.30
Thurs - Pastel group - 1.30-4.00
Thurs - Ladies Yoga 6-7 & 7.30-8.30

For bookings and hall hire costs
please email:

blccbookings@gmail.com or

contact Debbie Murray on

Debbie 07711 080519

Bullimores



Accountants for Life

**Tax • Accounts • Probate
Inheritance Tax &
Executorship**

T: 01306 880880

E: partners@bullimores.co.uk

W: www.bullimores.co.uk

Bullimores LLP licensed to carry out the reserved legal activity
of non-contentious probate in England & Wales by the ICAEW

WALTON HEATH MANOR

A BEAUTIFUL PLACE TO CALL HOME



Walton Heath Manor is a residential care home for older people and we are committed to promoting independence and diversity in personal choice. We understand the importance of personal preferences and aim always to respond in a manner which makes every individual feel valued and respected. Walton Heath Manor also offers short stay breaks for convalescence and respite care.

For further information or to be sent a brochure please call us on

01737 814010

Walton Heath Manor, Hurst Drive, Walton-on-the-Hill, Surrey KT20 7QT

email: admin@whmanor.co.uk

www.whmanor.co.uk

CHINTHURST

School & Nursery

Co-educational school for children
aged 2 1/2 to 11 years



OPEN MORNING

Wednesday 11 March

EARLY YEARS

FUNMORNING

Friday 20 March



www.chinthurstschool.co.uk

Part of the Reigate Grammar School Family

Update from Rebecca Paul

Member of Parliament for Reigate, Redhill, Banstead and our villages

Now that the weather has got warmer, I've been out and about speaking with residents and listening to concerns. It's incredibly important to me that I always hear your views and understand what matters to you. And one of the things I hear loud and clear is that you understand the need to build houses, but you want them built in the right location with the right infrastructure. You want our precious green belt protected as much as possible in order to preserve the identity of our villages and our beautiful landscapes, and you are increasingly concerned by recent planning applications.

The ludicrous doubling of Reigate & Banstead's housing target, alongside an equally ridiculous reduction in London's target, demonstrates how the current plans will not deliver much needed homes in the places where they are needed.

London is the rational and obvious place to increase density given its excellent transport links, infrastructure and job opportunities. But instead, building will largely take place in the home counties instead, driving people out of London in the pursuit of a more affordable home that is still commutable.

We are seeing this in practice with the spurious planning application submitted for land at Canons Farm between Burgh Heath and Kingswood. Developers are essentially trying their luck now they know that the Government is weakening protections for green belt land. The introduction of the very vague concept of "grey belt" land being a good example.



New proposed changes to the National Planning Policy Framework will further tilt the balance in favour of developers, unless we secure changes. I have therefore officially responded to the consultation as your Member of Parliament setting out my concerns.

There are two changes that will most impact our area.

Firstly, an essentially default "yes" to development for land within walking distance of a 'well-connected' train station, regardless of whether its green belt or not. This makes green belt protection in these zones around stations close to meaningless, and even puts station car

Update from Rebecca Paul

Member of Parliament for Reigate, Redhill, Banstead and our villages

parks at risk of development. I am particularly concerned about the impact this will have on Tadworth, Kingswood and Chipstead. Although I support the principle of looking at land close to good public transport links first, the guidance is too vague and fails to protect important greenbelt land around rural village stations. It also sets minimum density levels at too high a level for a village location. I'm afraid to say if this change goes through unamended, it has potentially seismic consequences for our area.

Secondly, the new guidance makes infill development much easier both within and on the edge of settlements. The aim of this change is to densify existing urban areas by filling gaps and building on gardens. Again, the principle is a reasonable one if done carefully and thoughtfully, but I am concerned that as currently drafted it won't get the balance right for areas like ours. In the north of the borough, the gaps between communities – for example between Banstead, Burgh Heath and Kingswood, or between Tadworth and Walton-on-the-Hill – are not incidental. They are what preserve village identity and prevent settlements merging into one continuous sprawl. Once these gaps are eroded, the character of the area is permanently changed.

Underlying both issues is a consistent lack of realism about infrastructure. New development around stations or village edges inevitably places pressure on already congested roads, local schools, GP services and on-street parking. Reducing parking provision on the assumption that rail access removes car dependency does not reflect how people in this part of Surrey actually travel. Station car parks, in particular, are part of the transport system and should not be treated as automatically available for development. I believe, and I hope you agree, that if growth is to be supported locally, it must remain local plan-led and sensitive to the settled character of our area, rather than driven by broad national rules that ignore local context. I want to reassure you that I will continue to fight against this watering down of green belt protections.

I also send out a monthly e-newsletter which may be of interest covering more of my work both in Westminster and locally. To subscribe, again please visit my website www.rebeccapaul.uk

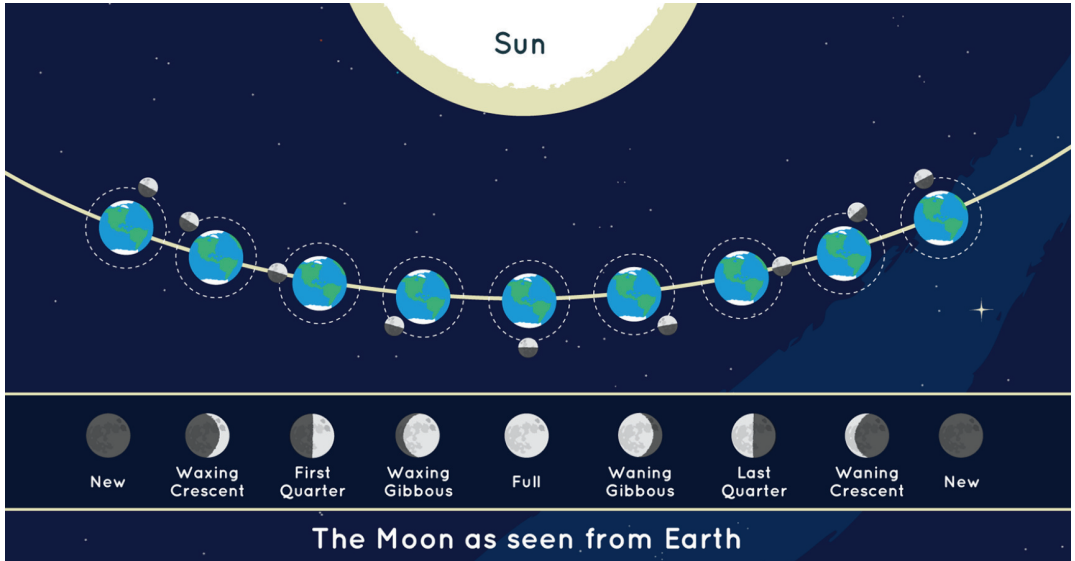
Very best wishes,

Rebecca

Well-being - Wholeness

Tracy Latham

The successful completion of Artemis Mission II in April this year saw a group of astronauts loop around the moon and capture amazing images of both the earth and moon from new vantage points on the journey. The Artemis missions are a source of great interest and excitement for those that are interested in space.



The eight lunar phases are, in order: **new Moon, waxing crescent, first quarter, waxing gibbous, full Moon, waning gibbous, third quarter, and waning crescent**. The cycle repeats about once a month (every 29.5 days).

The moon fascinates me, but from a vantage point with my feet firmly planted on the ground here on earth! In our entire solar system, the only object that shines with its own light is the Sun. That light always beams on to Earth and Moon from the direction of the Sun, illuminating half of our planet in its orbit and reflecting off the surface of the Moon to create moonlight. I love it when we get sustained periods of clear skies because they give me the chance to enjoy not just the warmth of the sun and its light but also the mystery of the moon and its changing appearance.

Like Earth, the Moon has a day side and a night side, which change as the Moon rotates. The Sun always illuminates half of the Moon while the other half remains dark, but how much we are able to see of that illuminated half changes as the Moon travels through its orbit. Sometimes the entire face of the Moon glows brightly. Other times we see only a thin crescent of light. Sometimes the Moon seems to disappear. Moonrise and moonset times also shift within the moon phases – which make it all the more intriguing.

Well-being cont.

Tracy Latham

I have learned that a full moon rises at sunset and a new moon is up all day.

Person centred therapy, founded by Carl Rogers, uses the language of ‘aspects of self’ to help us articulate and give language to the fact that we human beings, like the moon, can appear very different at different times and this make us quite intriguing too.

Sometimes we may talk about people having different personas or putting on masks but I find the ‘aspects of self’ language very helpful, particularly when I link it with the image of the moon, because it normalises the fact that different environments or situations illuminate or call forth different aspects of a person.

When, for example a person who has been stressed and exhausted all day at work or heavy at home with all the chores then goes to a gathering in the evening and finds they can be sociable and light hearted and feel quite energised – does it mean they are going mad or being inauthentic in one or other environment? Or does it mean that a different aspect of them is being illuminated?

Like the moon we are one whole entity but we don’t show all of ourselves all the time. Allowing different environments to bring different aspects of ourselves into the foreground can sometimes help our wellbeing because it helps us not to do global labelling or thinking.

Say, for example, we spend a lot of time with people who are very loud and extroverted, we might end up labelling ourselves as shy or retiring. But if we were to then put ourselves in a room full of quieter more introverted people we might develop a more nuanced view of ourselves – saying something like ‘I realise I can be quite confident really but don’t like to fight for the spotlight’. Sometimes certain aspects of a person are very good at hiding and they need lots of warmth and encouragement to dare to allow themselves to be seen.

In his book “Falling Upwards’ Richard Rohr encourages us that the second half of life provides us with a great opportunity to become more whole by discovering and developing the more hidden aspects of ourselves.

One of the Hebrew words for moon is ‘chodes’ which means renewal. Its waxing and waning can remind us that regular times of retreating to be renewed are normal and times of shining brightly like the full moon are too.

When we feel in need of renewal and refreshment isolation is not helpful but both solitude and being intentional about spending time finding nourishing and replenishing things often is.

Well-being cont.

Tracy Latham

As with many things in life there is a dialectical tension between our need to be sociable and our need to be alone, as well as between our need to be seen and our need for privacy.

Wellbeing is probably found in some sort of creative acceptance and integration of these needs into our individual lives. Carl Jung talked about ‘moonlight awareness’ which is a more subtle instinctive sort of knowing that comes from our whole being rather than our rational over-thinking mind and often is what helps us find the way of wellbeing for our whole selves within the mysteries and complexities of life.

However we or others appears in one particular environment, remembering we are all a little like the moon might help us refrain from assumptions or judgements about the whole being and to be a bit more curious and kind. Jesus spoke these words to a woman who had been hiding away because of shame about her ill health for 12 years – “Daughter, Go in peace. Your faith has made you whole.” This encourages me that identity matters, allowing our different parts to make peace with each other matters and trusting in our creator and redeemer matters when it comes to wellbeing and wholeness.

The Arts Society Walton on the Hill



We meet at the Riddell Hall on the third Thursday of each month except August for a lecture on an art related topic given by experts in their field. Coffee is served from 10.00 to 10.30. The Lecture is from 10.45 to 12.00. Guests are welcome at a cost of £5 per lecture. Annual membership is £45 for the year commencing April 2026. Forthcoming lectures include:

Thursday June 18th “The art of State Ceremonial Music” Graham Jones

Thursday July 16th “The Female Gaze: Women’s Photography” Suzanne Cooper

Thursday September 17th “Katsushika Hokusai and J.M.W. Turner” Carol Wilhilde
Justin

Thursday October 15th “The Baroque Country House” Amy Lim

Further details of the society’s activities and membership visit

www.theartssocietywaltononthehill.org.uk

or contact Membership Secretary, Mike Roshier on 07703 352643

Creating Fabulous Gardens

Hello! I'm Cindy Kirkland your Local & Qualified Garden Designer

Landscape Design | Garden Makeovers | Tree Sourcing | Instant Hedge Sourcing
Herbaceous Perennial & Shrub Sourcing | New Build Soft Landscaping | 3D CAD
Drawings | Privacy Screening | Planting Plans | Onsite Planting



Scan here
to view past projects



Lovely local
client feedback

"I have no hesitation in recommending Cindy/Creative Works. Her service was excellent. She and her team did a very good and efficient job planting up my new "mini woodland". She is very easy to work with. She communicated well and was responsive to any queries I raised. The team did a very neat job and left everything tidy. They completed the job on time and to budget" – Joan, Walton on the Hill

**Creative
Works**
Creative Inspiration
for living in style!

Call Cindy, to chat more about your
own Garden Design project
07976 449681
www.ckworks.net

Professional Tree Care



Tree Surgery & Felling
Hedge Cutting, Shrub Pruning
Tree Inspections & Reports
Stump Removal, Root Pruning
Logs & Wood Mulch Suppliers
All Workings Recycled

Call John Darter for a free quotation
01737 812389

Treemasters

www.treemasters.co.uk

ORDER YOUR NHS PRESCRIPTIONS ONLINE



WITH OUR NEW MANAGE MY MEDS APP



- 1) FREE standard delivery when you order via our APP
- 2) Express same day delivery*
- 3) Collect from your local pharmacy within 1 hour*



APPLE APP
STORE



Full details on our website
ShelversPharmacy.co.uk
WaltonPharmacy.co.uk

GOOGLE
PLAY STORE



* Subject to stock levels, further Terms and Conditions apply, please call the pharmacy for further details



MICHAEL
EVERETT & Co.

A moving experience...

WALTON ON THE HILL OFFICE
Regency House, 61 Walton Street
Walton on the Hill Surrey
KT20 7RZ

01737 814877
walton@michael-everett.co.uk