

# Window on Walton



St.  
**PETER'S CHURCH**  
WALTON ON THE HILL

Apr - May  
2026

• Parish News • Community • Local Events • Clubs & Groups

<https://www.stpeterswoth.org>



stpeterschurchwoth



st-peters-church-walton-on-the-hill

# St Peter's Team

**Rector**

Rev'd Harry Latham  
01737 812105  
rector@hilltopbenefice.org

**Benefice Curate**

Karen Wheatley  
karen@hilltopbenefice.org  
07493 195674

**Churchwarden**

Chris Grayson  
chris.merok@btinternet.com

**Organist and Junior Choir Lead**

Jenny Tuttle  
07733107672  
tuttle.jenny@gmail.com

**Churchyard Manager**

Neil Williams  
01737 813648  
n.williams142@btinternet.com

**Safeguarding Officer**

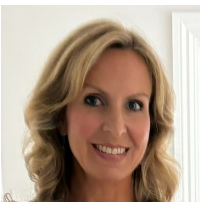
Anne Edwards  
07920484869  
SafeguardingWalton@hilltopbenefice.org

**Pastoral Assistant**

Karen Rand  
karenrand@gmail.com

**Treasurer**

Chrissie James, 07801 530222  
chrissiej10@gmail.com

**Magazine Editor**

Olivia Rowntree  
magazine@stpeterswoth.org  
01737 668 254

**Parish Administrator**

Nicola Glass  
admin@stpeterswoth.org  
01737 668 254  
(Tues & Thurs 9:30am-12:30pm)

If you enjoy reading Window on Walton, sign up and have it hand delivered to your door, six times per year for just £12. You can also contribute to future editions or advertise with us. For more details contact our editor [magazine@stpeterswoth.org](mailto:magazine@stpeterswoth.org)

**Colour Ad Size**

- Full Page
- Half Page
- Quarter Page

**Price / Annum**

- £180
- £100
- £80



All views expressed are those of the individual authors and are not necessarily those of St Peter's. While we strive for originality, contributors are responsible for ensuring they have the right to share any text or images submitted. All original content remains the copyright of the respective author/artist. If you believe any material infringes upon your copyright, please contact the Editor immediately so we can address the concern.

Window on Walton is printed by SDC Reprographics: 2, The Parade, Oldfields Road, Sutton, Surrey, SM1 2AA. 020 8644 4705/3788 [www.sdcprint.co.uk](http://www.sdcprint.co.uk)

# Rector's Letter

Rev'd Harry Latham

I hope you have had a good Lent, not necessarily one of denying yourself certain sweet treats, but one of getting to know God better - perhaps 'making peace' with Him about various things in your life.

Easter bursts in on the first Sunday in April as the triumph of Jesus' resurrection over the power of death and the place of the grave. 'Why do you look for the living among the dead?' say the angels. 'He is not here he has risen!'

This is good news, in that Jesus is still alive (never to die again) and we can know Him for ourselves. It is also good news for us as Christians in the face of death.

Indeed as Bishop Andrew said, prior to his death, he was "cheerfully persisting towards a good death", and that his "faith in the resurrection of the body and the life everlasting, had only grown stronger".

St Paul wrote to Christians in Rome: 'Jesus was delivered over to death for our sins and was raised to life for our justification.'

And as we face death we do not worry if our lives have been in any sense 'good enough' – of course not. Jesus' life and death for us has been completely good enough and he died for our sins, in our place and on our behalf.

More than that he was raised from death to life as proof that our debt is paid (for our justification), so we can know him for ourselves and so we know that at the general resurrection we will also be raised to everlasting life.

Do join us on Good Friday (April 3rd) and Easter Day (April 5th) if you possibly can. We have a wonderful Jesus!

Looking beyond Easter to the summer term, from May, (as I mentioned in the last Magazine) until September on the 2nd Sunday of the month the main morning service will alternate between St Peter's and St Mary's as an experiment. And where there is a 5th Sunday there the main service will be the 10.30am at St Andrew's.

# Rector's Letter cont.

Rev'd Harry Latham

In addition from May to September the 8am Service on the 4th Sunday will take place at St Mary's, not at St Peter's.

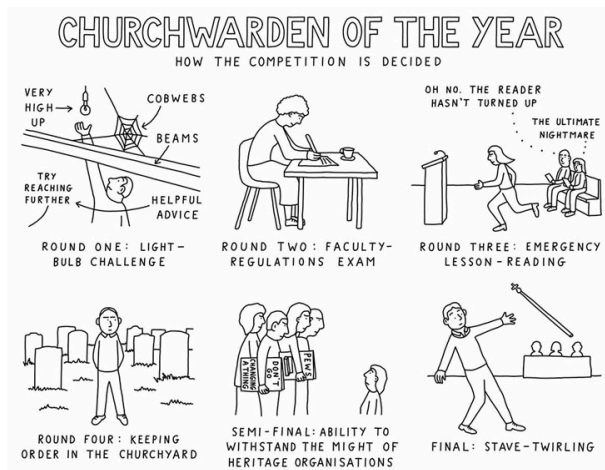
**Notice of Annual Church APCM**  
The Annual Church Meeting (APCM) will be held after the service at St Peter's on Sunday 10<sup>th</sup> May.

I know that a good number of St Peter's congregations from 8am and 11am have enjoyed visiting St Mary's and St Andrew's at different times, and we enjoy them visiting us.

Let us all try and prioritise the opportunities to gather the three churches in our United Benefice together. And that will help us chart our way forward in the Autumn.

## Churchwarden very much needed

*Please talk  
to Harry*



# A Lent & Easter Prayer

by John Birch

Remind us often Lord,  
when we are feeling  
proud,  
arrogant,  
beyond reproach,  
pleased with ourselves,  
self-sufficient in our ways,  
that for such as us  
and better  
and worse  
you walked a road  
that took you to a cruel cross,  
and rose again to show us where  
we might look for rescue  
as from this lofty perch we fall.

It is only you  
who can read and understand  
the language of our hearts,  
only you who can translate our 'sorry'  
into the prayer we would have prayed,  
if we had the words within us.  
Then you forgive,  
and having forgiven  
surround us in an embrace of love,  
drawing us close to your heart,  
as it was always meant to be.  
Thank you, Loving Father,  
that you listen to hearts,  
as well as voices  
Thank you.

## Wanted Part-time paid Children & Families worker

For details and  
more information  
Please contact Nicola  
[admin@stpeterswoth.org](mailto:admin@stpeterswoth.org)



# News from our Churchwarden

Chris Grayson

As I come to the end of my time as your churchwarden, I thought I should look back at the themes that I have reflected on over the last three years. In my first newsletter I thought that I might have to deal with the effects of climate change, the issues around becoming carbon neutral and then went on to discuss the problems associated with heating and insulating a church building.

Well, I was on the money there. Over the months I have returned to this subject on several occasions, particularly around the time when our boiler died and we had to go down the route of an expensive repair to avoid falling foul of the CofE's demand that old gas boilers not be replaced with new gas boilers but with net zero solutions.

The spin off from this was that PCC decided that we needed to examine our heating options and establish if there is a viable heating option other than gas before our current boiler dies beyond repair. Thus the Heating Renewal Team was born. It has since issued an interim report identifying

which options are practical and financially viable for us.

Another repeated item in my column has been the ways in which we can all contribute to the life of the church (and the church). Sometimes I have focused on our need for financial resources but more often than not I see I have written about those things where a little bit of time and activity can be a real help.

Early on I identified that the signage around the forecourt, where some of you park for services, was not very clear. I have to admit that I never quite got to grips with this one. However it is still on 'the list' and I am discussing plans with our excellent Parish Administrator, Nicola.

In terms of major projects, progress has been slow. I inherited the chancel roof repairs but even that took a lot of time to get to completion. Although over a year in the making we are about to embark on the stonework repairs. The stones have been measured and we are waiting for the quarry to give us a delivery date so that the contractor

# News from our Churchwarden cont.

can confirm when they can start.

My other repeated theme that hasn't, as yet, made any progress has been my attempt to gather the family stories of, at least some of, the fallen that are commemorated on our walls. It would be wonderful if we could put some faces and back stories against their names. I have also been asked about the history of our church and have had very little to offer as the booklet, that I'm told we once had, is long out of print, as is the book by Kenneth Clew. Does anyone have a copy of either document that could be examined by way of developing a new guidebook?

After standing down, in the short term at least, I will still be supporting Harry with administrative, financial and other matters until we have people to take those over. I hope, unless someone else gets to it first, to take up the vacant role of eco-champion, a role that covers matters close to my heart.

Before I sign off I must thank all of the people that have helped me during my period as churchwarden. Thank you all for correcting my errors and omissions in the most gentle way and guiding me

to a better understanding of all that makes up what we glibly describe as 'our church'.



## Coffee & Conversation with Art and Prayers We Love

10.30am - 12pm St Peter's Church,  
last Wednesday of the month

**Meet friends and make friends over a cuppa.**

**Once a month - including a hymn and short talk, helping us appreciate Art and Prayers We Love**

For further details, please contact Rev'd Karen Wheatley  
at [karen@hilltopbenfice.org](mailto:karen@hilltopbenfice.org)

# Parish Giving



Thank you for financially supporting St Peter's Church  
Please review how much you can give  
Please consider planned giving  
Please explore the Parish Giving Scheme



<https://www.parishgiving.org.uk/donors/find-your-parish/walton-on-the-hill-st-peter-tadworth>

- ⇒ Follow the above link (Or look out for email with link)
- ⇒ select the option that says **Regular Giving**
- ⇒ follow the instructions to fill in the form.



Details of the  
found on the

# Parish Giving



## Benefits of the Parish Giving Scheme(PGS)

This secure and simple method of giving serves givers and churches.

### The giver benefits from:

- ◇ Retaining control of how much they give, how often and to which church
- ◇ Using a simple method of regular financial support to their church
- ◇ The option to increase giving annually to protect their gift against inflation
- ◇ Anonymity, if preferred
- ◇ Peace of mind that the Direct Debit Guarantee Scheme

### The treasurer benefits from:

- ◇ Reduced administration and paperwork
- ◇ Easy access to monthly and annual statements

### The church benefits from:

- ◇ Stable and often increased planned giving
- ◇ Efficient and regular reclaim of Gift Aid

The administrative cost of operating the scheme is covered by each member diocese, making the service free to use for churches and givers.

GoCardless Ltd (company registration number 07495895) is authorised by the Financial Conduct Authority under the Payment Services Regulations 2017, registration number 597190, for the provision of payment services.

As a charity whose origins are within the Church, PGS is dedicated to serving givers and churches in a shared ministry of giving. Every pound donated through PGS can be put to Christian service in the local community, free from time-consuming admin.

by Karen Rand, Lucasta Grayson and Anne Edwards

### **February Meeting**

On one of those rare sunny days in February we met in the Octagon at St Marys' for a morning of quiet reflection. We were led by Jenny Firth from St Paul's Dorking, who, after coffee and introductions, asked us to write down all the worries that were weighing on our minds and then to screw them up and throw them in the bin.

Having liberated us from our worries Jenny talked to us about the power of baptism and of the forgiveness that we receive through Christ's death on the Cross. We had opportunities to reflect on these discussions and some key bible references at various points during the morning. We spent quiet time in and around the Church before returning to the Octagon for a pancake flipping race and more discussion about the many ways that we can mark Lent as a holy time. We talked about fasting and giving things up but also, more importantly, doing something different to help us reflect on the importance of this season. This included, reading books, attending Lent courses and using apps such as Lectio 365 to help us reflect on the power of Gods presence in our lives.

Feeling spiritually refreshed we finished off the morning with lunch and more time to chat in the Cock Inn.



Jan and jane joined us for our February meeting

### **March Meeting**

Our March meeting also had a lenten theme. We welcomed David Skitt and his friends Margaret and Fiona once again to lead us in a Reflection for Lent. We started with a shared lunch before settling down to hear David's session. His inspiration was a walk on Colley Hill at New Year where he initially felt disappointment as a thick layer of mist blocked most of the view.

by Karen Rand, Lucasta Grayson and Anne Edwards

On reflection he realised that the band of white mist which was sandwiched between a blue sky and green grass was itself a beautiful image. He told us how these three colours should influence our view of Lent. The green grass was a reminder to keep our feet on the ground and always appreciate the many blessings in our daily lives; the blue sky represents the vision of what our lives can be and how we can take action to make that vision a reality.

Finally the white mist represented the unclear future that lies ahead. He encouraged us to step out into the mist with God's vision in our minds, always reaching out a helping hand to those around us. His talk was interspersed with bible readings, poems and music and which left us feeling peaceful and refreshed.

### **Knitted Daffodils - Thank You!**

Thank you to the person who left some yellow wool and knitting needles and the instructions for knitted daffodils for Mothering Sunday!

We missed the boat this year - but will aim for 2027! Perhaps this is the moment to start a knit and natter group!



March MU gathering



March MU lunch

Mothers' UNION  
Christian care for families



Our next Mother's Union event is the Easter Egg Hunt at The school Pavilion,  
Breech Lane on **Tuesday 31st March** - do join us!

The poster features a light blue background with a string of colorful Easter eggs hanging from the top. The eggs have various patterns: purple with white dots, orange with white zig-zags, green with white dots, pink with white stripes, and blue with white dots. There are also small colorful flowers hanging from the string. Two white clouds are positioned on either side of the main title. At the bottom, there are several large, colorful Easter eggs with various patterns (green with white checkered, pink with white zig-zags, blue with white zig-zags, yellow with white dots, purple with white dots, and pink with white dots) and small colorful flowers (blue, orange, purple, yellow) growing from the bottom.

# EASTER EGG HUNT

**TUESDAY 31ST MARCH 2026**

**2:30-4PM**

**THE PAVILION, WALTON SCHOOL  
PLAYING FIELDS, BREECH LANE**

**PLEASE COME AND JOIN US FOR FUN,  
CRAFTS, GAMES, HOT CROSS BUNS AND  
OF COURSE EASTER EGGS!**

**ALL WELCOME!**

[stpeterswoth.org](http://stpeterswoth.org) [admin@stpeterswoth.org](mailto:admin@stpeterswoth.org)

# Spring Walk

Tuesday 12th May

Meet at **St Peter's at 12:30** to walk to  
Headley - **or** meet the walkers at the  
**Cock Inn at 1:30pm** for lunch.

Please contact Lucasta if you intend to join for  
lunch:

[lucastachris@btinternet.com](mailto:lucastachris@btinternet.com)  
07913388654



by Karen Rand, Lucasta Grayson and Anne Edwards

Mothers and Uthers meet on the **second Tuesday** of each month. Please do join us!

### **MU Diocesan Festival Eucharist**

2026 marks the 150th anniversary of the founding of Mothers' Union by Mary Sumner. The annual Lady Day service at Guildford Cathedral was held on March 17th to avoid a clash with the Installation of the Archbishop of Canterbury on the 25th. It was a true celebration of Mary Sumner's work and her continuing legacy.

Alongside a photo exhibition, there were stalls displaying current MU activities both locally and internationally. It was so clear that MU is doing important work across the Diocese in preventing the escalation of difficulties in families.

The service started and ended with a parade of over forty MU banners. Heartfelt thanks go to David and Mo Atkins who fixed the St Peter's banner to a brass curtain pole, making it enviably light to carry. The service focused, as expected, on the past and future work of MU while sustaining a formal eucharistic structure. It was a solemn occasion, enriched by so much evidence of the strength of MU across the Diocese. Of course every MU report needs to mention food, and we strongly recommend Seasons Café at the Cathedral.



St Peter's Mother's Union banner



## 150<sup>th</sup> Anniversary Challenge

*Mothers' Union marks 150 years with global challenge as Worldwide President completes runs in Canada and Bahrain*

2026 is a landmark year for Mothers' Union as we celebrate 150 years of faith in action, with the year being marked with a series of special events, fundraising and engagement opportunities.

At the heart of this milestone year is Kathleen Snow, Worldwide President of Mothers' Union.

She is partaking in a Global 150th Anniversary Challenge: 15 10 kilometre runs in various dioceses around the world to raise funds and spotlight MU's worldwide fellowship.

Running in different dioceses while travelling for ministry reflects the global expression of solidarity and celebration that sustains our work and reminds us that wherever we are in the world, we are connected.

Kathleen has already completed one run, an early-year winter 10k in her hometown Fredericton, Canada, and today will undertake a run in Bahrain during the Diocesan Synod of Cyprus and the Gulf.



Kathleen shared: “As I attended the Diocesan Synod in Bahrain, it feels deeply meaningful to include this place in the challenge. Running becomes a way of praying with my whole body; praying for the local Mothers' Union and their work, the Diocese of Cyprus and the Gulf, the wider Province of Jerusalem and the Middle East, and for all whom we are called to serve.”

Over the coming months, Kathleen will continue the challenge with planned runs in dioceses across the UK, North America, Africa, and beyond, from London and Wales to San Diego, Durban, and Tanzania, making this a truly global expression of shared commitment and celebration.

If you wish to support Kathleen in her challenge throughout the year, you can donate here:

<https://www.justgiving.com/page/kathleen-snow-1>

# Mothers' Union Prayer Diary

## **April Reflection**

Easter tide reminds us of the expense of God's endeavour to enfold us in gifts of love and invite a response. The cross and empty grave shape the final chapter in the salvation story - a story of tragedy and triumph, and one which endures to eternity. It is a love that does not count the cost. It is a love which will not let us go. As Christians and as MU members, we are called to reflect God's love in prayer and action. May the joy of Easter warm us, and radiate from us, as we journey through our days.

## **April Monthly Prayer**

God of love, in silence and in speaking, we worship You. You are the very breath of our lives; You are the promise of renewal; You are the offer of forgiveness; You are the flame of inspiration; You are the wind of challenging change.

Renew, forgive, inspire and challenge us, and fit us for Your service: in Jesus' name.

## **May Reflection**

As we wait for God's kingdom to come, we have time to think about how we can make His kingdom known here and now. Let us spread God's message to as many people as we can through our faith in action at Mothers' Union, working to end poverty, violence and injustice for all Your people at home and around the world.

## **May Monthly Prayer**

Our Father, Thy kingdom come, on earth as it is in heaven. Let us make a heaven here on earth, for all, acting as Your hands and feet, ensuring that the world is a place of plenty for all, safe for all, loving for all, comfort for all. Let Your wondrous earth be a place where all can not just grow, but flourish and become everything You wish them to be. Amen

**For the diary.....**



**April 10  
& May 1**

**Friday  
Coffee**

**St Mary's  
Octagon  
Headley  
10.30am**

**Prayer & Pastries**

**9.15am**

**Fridays, in Term Time**

**St Andrew's Boxhill**

**All Welcome**



# TWOAT

Mike Fox

Tadworth & Walton Overseas Aid Trust (TWOAT) shares encouraging updates from two of the projects supported through recent fundraising efforts.

## Tree Planting in Malawi

Thanks to donations to TWOAT's Christmas Appeal, 2,000 saplings are now being prepared for planting in Malawi.



During a recent Zoom call with project workers, supporters learned about a remarkable tree—known locally by a different name but often called the Camel's Foot or Orchid Tree. This tree is drought-resistant, can be planted close to main crops like maize, and has many uses: its seeds can serve as a caffeine-free coffee substitute, and its leaves are both edible and valued



for medicinal purposes. Traditional knowledge from local elders about its healing properties is being actively preserved alongside scientific research confirming the plant's beneficial compounds.

# TWOAT cont. and Note from Norma

Mike Fox & Norma Darter

## Refugee School on the Thailand– Myanmar Border

TWOAT also supports a school for refugees on the Thailand–Myanmar border. The school now has 243 pupils, taught by 16 teachers with support from two cooks.

TWOAT funds most of the food and staffing costs, including breakfast twice a week, where children receive milk or juice with bread, wafers, cookies, or cakes. Over the past three months, the cost of meals has been 124,000 Thai Baht, with cooks' salaries totalling 12,000 TB.

## Forthcoming TWOAT Events:

- **Concert by Anna Howie** – Kingswood Village Hall, 18<sup>th</sup> April, 7.30pm (doors 7pm). Tickets £15 via Kingswood Village Store or online at TicketSource [www.ticketsource.co.uk/KVCA](http://www.ticketsource.co.uk/KVCA)
- **Annual Street Collection** – 24<sup>th</sup> and 25<sup>th</sup> April.
- **Bottle Stall at Walton May Fayre** – 16<sup>th</sup> May. Helpers welcome.
- **John Allinson Sponsored Walks** – 15<sup>th</sup> May and 6<sup>th</sup> June.

Please visit the TWOAT web site [www.TWOAT.org](http://www.TWOAT.org) to learn more about our activities or to donate if you can, or phone me on 01737 350452.

.....

## A Note from Norma

Recently, Bill came across a newspaper cutting (Surrey Mirror and County Post) dated Friday 16th September 1932. We found the article covering the wedding that week, in St Peter's church, of my Auntie Lilian Marsh to Mr Charles Inkpen.

Now this may not interest many people, other than Val Griffiths, whose Mother Eva was a great friend of Lily, and a few old Waltonians, but there may be a few

names you recognise. Auntie Lily and Uncle Charlie had both worked for Mr James Braid (famous golfer) for eight years. Mrs Harry Braid presided at the organ. The article tells of the hymns that were sung, the names of five bridesmaids, what they were wearing, the flowers they were carrying and the gifts given to the bride and bridesmaids from the groom.

# Note from Norma cont.

**Norma Darter**

114 guests attended the reception in the Drill Hall (The Lord Riddell Memorial Hall), among them the families of the bride and groom and Miss Gladys Warwick, the bride and grooms former school teacher. Later in the afternoon the newly married couple left for Preston. The bride travelled in a figured silk dress, smart tailored coat, wine velour hat and carried a beautiful handbag; a gift from Mrs James Braid.

In the evening the guests enjoyed dancing, in the gaily decorated hall to the strains of Goldsmiths Band. One 84 year old guest who was a well known resident sang his old favourite, "The Oyster Girl"! Mr and Mrs Inkpen were the recipients of 140 handsome and useful presents, including three cheques, two Irish Sweepstake tickets, and gifts from well known golfers, friends of the bride and groom.

It was a very long newspaper article and you are welcome to read it if you are at all interested!

Hope to see you at events coming up during the spring, hopefully getting a bit warmer and sunnier.

Take care, Norma

P.S: Just to let you know that Marilyn and I sent a cheque to The Royal Marsden for £2,112.95.

This was for Christmas cards sold and included £364 donations to the hospital. THANK YOU to everyone who supported us. The fundraising department were delighted.

# Walton in Bloom

by Jean Bye

What a fabulous show Gun Corner and the village green are giving us this year-I think it might be one of the best so far. We will be moving on to other areas in the Autumn.

I was able to give a short talk at the Walton Village Forum on how Walton in Bloom (WIB) came into existence, about 12 years ago. Many grateful thanks go to Ethel Armstrong and Lin Ferg for starting WIB.

Whilst we have been given some generous contributions to our hanging basket fund, we still need more to cover costs. I'm pleased to confirm we will be having hanging baskets again this year. So if you would like to make a donation however small, you can make a direct payment to:

Walton Village Forum

Sort code: 30-98-43

A/C No: 00310472

See you at the May Pageant !



# Sunday Service Format at St Peter's

## **8:00am - 8:45am 1662 Prayer Book Communion**

This is a quiet, traditional and spoken service of communion with a short talk.

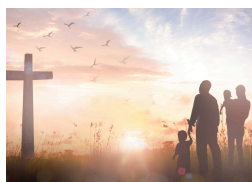
## **11:00am - 12:00pm Main Service**

This service is our main service of the day.  
Tea & coffee served from 10:30am



### **1st Sunday - ALL-AGE Service**

(with craft activity)



### **2nd Sunday - FAMILY COMMUNION Service**

(less traditional)



### **3rd Sunday - FAMILY Service**

(quite lively)



### **4th Sunday - PARISH COMMUNION Service**

(more traditional)



### **5th Sunday - UNITED BENEFICE Service**

(at either St Peter's, St Mary's or St Andrew's)

# Services at St Peter's

## April - May

### April

**3rd - Good Friday** 10am Mere Pond & 10.30am Family Service

**5th - Easter Day** 8am Holy Communion (1662) & 11am Family Communion

**12th** - 8am Holy Communion (1662) & 11am Family Communion

**15th** - Wednesday 10am Healing Communion, Headley Octagon

**19th** - 8am Holy Communion (1662) & 11am Family Service

**26th** - 8am Holy Communion (1662) & 11am Parish Communion

### May

**3rd** - 8am Holy Communion (1662) & 11am All-Age Service

**10th** - 8am Holy Communion (1662) & 11am All Together Benefice Communion

**17th** - 8am Holy Communion (1662) & 11am Pageant Family Service

**20th** - Wednesday 10am Healing Communion, Headley Octagon

**24th** - 8am Holy Communion (1662) & 11am Family Communion

**31st** - 8am Holy Communion (1662) & 10.30am All Together Benefice Communion at St Andrew's Box Hill

*Join us for tea and coffee, served from 10.30am every Sunday - All Welcome*

# News from Walton Primary School

Richard Laing, Headteacher



It is a real pleasure to be writing to you as Headteacher of Walton-on-the-Hill Primary School. While I am relatively new to that particular role, Walton itself is very much home. Having previously served as Deputy Head and Head of School here for almost 20 years, I feel incredibly fortunate to lead a school in a community that I know and care about so deeply.

There is something special about Walton-on-the-Hill that is hard to put into words, yet those who are part of it feel it immediately. We often refer to it as “Walton-ness” – a strong sense of warmth, belonging and community that sits at the heart of both the school and the village. It is that feeling of being known, valued and connected that makes this place so unique.

In an ever-changing world, where it can sometimes feel harder for children and families to feel truly connected to their communities, we see our role as more important than ever. At Walton, we are committed to nurturing a genuine sense of belonging for every child – ensuring that each one feels safe, included and proud to be part of something bigger than themselves. The connections they

make at primary school stay with them far beyond.

I am incredibly proud of what the school continues to achieve. Our recent Ofsted inspection recognised the strength of our provision, particularly in areas such as the early years, personal development, inclusion, behaviour and the quality of relationships across the school. Outcomes for our pupils remain very strong, and we continue to be a popular and well-regarded school within the local area.

However, what matters most to us goes beyond results. It is the daily experiences of the children – the kindness they show, the confidence they build, the opportunities they embrace – that truly define who we are. Whether through outdoor learning, sport, the arts or pupil leadership, we strive to ensure that every child can belong, learn and shine.

We are proud to be at the heart of this community and are always looking for ways to strengthen those connections further.

# News from Walton Primary School cont.

We welcome volunteers to come in and read with children, do some gardening, share their life experience or help out in any way they can.

If you are interested in getting involved then please do contact the school office.

Similarly, if there are events in the community that you think children might enjoy or you would like us to support, please do reach out.

We would love to get even more involved in wider village life.

Walton-on-the-Hill Primary is not just a school within the village – it is part of its fabric. It's a privilege and a pleasure to lead it.

Very best wishes  
Richard Laing Headteacher

## Buckland Nurseries Garden Centre



**A25 Reigate Road,  
Buckland, RH2 9RE**

**01737 242 990**

**[bucklandnurseries.co.uk](http://bucklandnurseries.co.uk)**



**Thomas Hogg & Son Ltd est. 1865** ✦

# Box Hill Dawn Service, Ascension Day 2025

Sue Adilz

On a murky morning, we walked from St Peter's to Box Hill. My feet hurt and ached all day. Once in Box Hill, having thought twice on Headley Heath, as the many paths and high foliage made the route unrecognisable from last year, when Ascension Day was three weeks earlier, we passed St Andrew's waving at Harry through the window, where breakfast was being prepared. The glowing lights, warmth and promise of bacon sandwiches after the service, something to look forward to. Box Hill was cold. A misty rain fell. I sat on the monument. Darren joined Harry to play guitar for the service. We sang some modern songs. Folk from all around the Benefice and from Stoneleigh, Fetcham and Ashted came to join us. We prayed for all the surrounding villages and sang lustily. A couple passing by briefly stopped to join us before continuing their morning walk.

Box Hill is a romantic and scenic place, saved from development and preserved for the nation as an open space, by early supporters of what became the National Trust. Normally crowded with day trippers, cyclists, walkers and picnic lovers, in the dank

early morning it was quiet, with a misty Dorking below.

Our songs and prayers muffled in the breeze, we worshipped and remembered that Jesus, who had died and risen, was ascending to His Father in Heaven. It was a poignant moment, a time of grace, an event marked, remembered, as if Jesus, with us in Spirit was himself rising from that very viewpoint. No doubt others have their mountains, but we have our own local hill, from which we celebrate and mark this special occasion each year.

Afterwards, catching a lift to St Andrew's, the warmth and light of the church welcomed us. We sat on comfortable chairs, in circles, arranged by Harry. Karen served tea and bacon sandwiches, the kitchen ladies seemingly with an inexhaustive supply. Harry chatted to us about highlights of his sabbatical in Iona. Neil kindly gave us a lift home.

Thank you to Rev'ds Harry & Karen and the parishioners at St Andrew's Box Hill, for their welcome and hospitality. Amen

# Walton Village Forum

**Emmeline Moore**

On the 24th February at 8pm, our local Dog House pub was bustling with residents attending the WVF meeting. We comfortably filled the back room of the Dog House, and the pub even ran out of the highly sought-after beer tankards!

Our Chairman, George Curry, opened the meeting with the usual administrative business and Marilyn, our treasurer, spoke about our finances. Next up was the very extensive report on Mere Pond by David Lerner. Unfortunately David was not well enough to attend the meeting, however the report can be found on our website, [www.waltonvillageforum.org](http://www.waltonvillageforum.org) A round of applause was gifted to David for all his hard work and dedication with everything Mere. Thank you, David.

Jean Bye (Walton in Bloom) confirmed the village would be in full colour again this summer, with hanging baskets and tubs galore. She was grateful for the donations already received but is seeking further contributions from local residents and local businesses. If you're interested in making a donation, however small, it will be very gratefully received. Thank you!

Walton Village Forum

Sort code: 30 98 43

Account number: 00310472

Thank you Jean for all your efforts. Everyone agreed that Gun Corner was looking spectacular this spring.

We are always lucky to have Councillor Ben Green, Zelanie Cooper and Rod Ashford attend our meetings. Hot topics this time were the combining of boroughs to create an East Surrey Council. The discussions of a potential parish council from Robert Harris at the TWRA and general local planning updates.

Rob from Keep Walton Green, spoke about the charity's future and opportunities. There has still been no news on the planning application for Chequers Lane. We will however keep you all posted the minute we hear anything.

The evening finished in good humour and second drinks were purchased. Thank you very much to the Dog House for accommodating us, we thoroughly enjoyed ourselves.

Walton Village Forum future meetings:  
23<sup>rd</sup> June 2026 and 27<sup>th</sup> October 2026.  
<https://www.waltonvillageforum.org>

# HILLTOP COMMUNITY CHOIR

HEADLEY | WALTON | BOXHILL



Wednesdays 8-9pm (refreshments from 7.30pm)  
St Mary's Church, Headley KT18 6LE  
Contact: hilltopcommunitychoir@gmail.com

**SINGING | MUSIC | FUN | FRIENDSHIP**  
beginners welcome - no experience necessary



## PROFESSIONALS IN HOME PAINTING



Registered LTD Company  Google Approved  Friendly & Approachable   
Fully Insured  Flawless 5 Star Reviews 



OUR PORTFOLIO   
@GOULDDFLTLD

OUR REVIEWS 

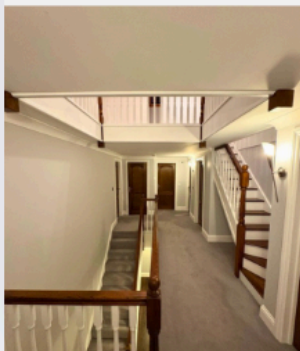
YOUR 5 ★★★★★ HOME PAINTING SERVICE -  
SEARCH "GOULD D&F" ONLINE.

### CONTACT US TODAY

020 80 50 60 03

[www.gouldsltd.co.uk](http://www.gouldsltd.co.uk)

[contact@gouldsltd.co.uk](mailto:contact@gouldsltd.co.uk)



## Walton Parochial Charities.

✂ If you live within the parish of Walton on the Hill then the Walton Parochial Charities could help you.

✂ A centuries old fund is in place to help the elderly, sick, disabled, distressed and 'in need'.

✂ If you or anyone you know is struggling financially then please ask them to leave a message in confidence at the St Peter's Church office.

01737668254

admin@stpeterswoth.org



## SURREY ACCOUNTANTS

Chartered Certified Accountants



Proud Member of  
**Cheekaprofessional.com**  
(Where Accountants Meet)

- ✓ Specialists in assisting small businesses
- ✓ Conveniently located in Walton on the Hill
- ✓ FREE consultation

Grive House, 45 Walton Street,  
Walton on the Hill, Surrey, KT20 7RR

TEL: 01737 813 000

WEB: [www.surrey-accountants.co.uk](http://www.surrey-accountants.co.uk)

# News from TWRA

Mike Fox

TWRA has recently objected to an 'outline application' for 130 new houses to be constructed on fields adjacent to Copt Hill Lane in Kingswood and immediately south of Burgh Heath. Vehicular access is only provided via Canons Lane in Burgh Heath. Details can be seen on the Council's planning web site for application 26/00128.

The deadline for making representations has passed, but the council normally accepts late objections up to the time the application is determined. If you share the concerns shared here, please respond to the application.

## **Why it is important for our residents?**

We have objected because many residents of Tadworth and Walton use the footpath network on or near the application site for recreation purposes. In addition, the many new dwellings will put further pressures on the local services we all use such as the highway network, health facilities and schools some of which are already at capacity. Planning permission has already been given for developing the nearby Legal & General site and this will put pressure on the local

infrastructure. There are also very real concerns that if the current application is successful, it will be followed by more applications for developing neighbouring farmland, again for housing.

Our grounds for objection:

- The proposed development is not on a site allocated for housing in the Local Plan.
- The council is currently meeting the government's five-year housing target for the borough so there is no need for additional dwellings at the present time.
- We disagree with the applicants that the site is Grey Belt land appropriate for development. To be Grey Belt it has to meet certain criteria and several of these are not met.
- The site is in the Green Belt and we set out arguments why this is inappropriate development in the Green Belt, including encroaching on the countryside and loss of the open nature of the area.
- A major concern is the very poor vehicular access onto Canons Lane. This is a narrow road and, with on-street parking, there is only space for one lane of traffic.

# News from TWRA

- In some stretches there are no footpaths. It is unsuitable for increased traffic flows, including large construction vehicles. There is also a problem with the junction onto the A217 which is already dangerous and the additional traffic will intensify safety problems.
- The agricultural land is very high quality – grade 2 and 3a and should be protected for food production.
- The site is in an Area of Great Landscape Value and forms part of an attractive area of countryside which should be protected.
- The site is in an unsustainable location, being poorly located in relation to bus routes and some distance from Kingswood station. It is also some distance from local shopping centres, schools and medical facilities.
- A geological report indicates that the area is susceptible to sinkholes and more detailed surveys are required.
- Local evidence shows that the area is rich in wildlife, with many different bird species.

Last May the field, now proposed for houses, was growing broad beans. Looking north-east along the footpath from Kingswood to Burgh Heath.



The Hilltop Community Choir will be sharing proceeds, from a 'Cabaret Evening', with Friends of St Peter's on FRIDAY, 8th MAY, at 7.30pm in the Riddell Hall. Come along for a fun evening of show stopping numbers!

**Friends of St Peter's** will, once again be holding a 'POSH BOTTLE TOMBOLA', at the MAY PAGEANT, on SATURDAY, 16th MAY. Come and find us, in the corner of the field, near the Tea Tent and children's playground.

'Quality' contributions to this popular stall will be most appreciated. These can be delivered to Mo Atkins, at Bryher, 47, Tadworth Street, or to Philip Truett, at Walton Cottage, Deans Lane.

The Hilltop Community Choir  
'Cabaret Evening'

The Riddell Memorial Hall

Friday 8th May  
7.30pm, doors at 7pm

A Fun-Filled Evening of Show-Stopping Songs  
Light Entertainment  
Raffle

Pay bar selling wine, soft drinks and nibbles



Tickets £10 on the door  
or use this QR code  
under 12s go free



to support the Hilltop Community Choir & Friends of St Peter's

# Village Kitchen & Open Group

Mo Atkins

## VILLAGE KITCHEN

The Village Kitchen continues to thrive. At time of writing, four of six, Soup Saturdays during Lent, have taken place in the Riddell Hall. Well attended, the Lent Lunches provide a social hub as well physical sustenance. Many thanks are due to the willing band of homemade soup makers, and to all the volunteers who shop; set up; serve; wash up; provide lifts; clear up; launder linen, and also deliver takeaway soups to those unable to attend. A special thanks to Betty and Debbie, for their cake baking treats (even though during Lent, less indulgent biscuits are usually the order of the day!).

The regular monthly Village Kitchen will recommence on SATURDAY 9th MAY, 12pm - 1.30pm, and thereafter on the second Saturdays of June and July. Everyone is warmly welcome.

Proceeds this year will be divided between The Children's Trust and The Leatherhead Link.

**OPEN GROUP** is scheduled, once again, to run the TEA TENT, at the MAY PAGEANT, on SATURDAY, 16th MAY. However this will only be possible if there is enough help, and if the pavilion is in a clean and hygienic state from which to serve teas.

Many of those who have been loyal helpers for very many years are reaching a more senior stage in life! We would love to hear from anyone who would like to help in the setting up and clearing up on the day. This involves erecting a gazebo, moving tables and chairs from the Riddell Hall to Howard Close playing field, returning them at the end of the day.

The Tea Tent will be situated in the corner of the field, by the pavilion and the children's playground, near Friends of St Peter's, 'Posh Bottle Stall'.

Offers of cakes, and a stint serving, are also welcome, so please let us know if you are able to help / contribute.

Email: waltonopengroup@gmail.com or speak to Mo on 07799136894 or Norma on 01737 812639.

# World Day of Prayer

Mo Atkins

World Day of Prayer' is a global movement of informed prayer and prayerful action. Each year, Christian women from a chosen country prepare the service, held worldwide, on the first Friday in March.

The local committee comprises representatives from the Hilltop Benefice, Tadworth and Kingswood. They meet annually to organise and present the service as planned by the chosen country.



It is poignant to think that, in participating in this service, we became part of a twenty-four-hour wave of prayer which encircles the globe, beginning in Samoa and ending, 146 countries later, in American Samoa.

This year, it was the turn of St. Peter's to host the service, prepared by the Christian women of Nigeria, on the

theme 'I will give you rest, come' (Matthew 11:28-30). A theme which resonated with many of those present.

During the service we heard the moving stories of four Nigerian women. Women who, as the service booklet tells, inspire us to work towards a world without injustice, insecurity, marginalisation, religious persecution, poverty and despair.

The church was decorated with African bunting, and artwork depicting the daily hardship of rural Nigerian women. An 'altar table' displayed the Nigerian flag and items, symbolic of Nigeria.



Altar table' of items symbolic of Nigeria and painting by Amarachi Ottah



African bunting adorns St Peter's Church

# World Day of Prayer

Mo Atkins

It was lovely to welcome so many friends from Box Hill, Headley, Tadworth, Kingswood and beyond, for the ecumenical service, on a very damp afternoon. In particular, it was a joy to have Temi and Uche with us, taking part with enthusiasm, sharing customs, and bringing us closer to Nigeria.

It is not every service at St. Peter's which sees those taking the offertory, shimmying down the aisle to Nigerian music, with the congregation losing inhibitions and clapping rhythmically! The offertory raised £502 towards the work of World Day of Prayer projects.

The chosen hymns were uplifting, and we were very grateful to Jenny Tuttle for playing the organ.

Thank you to our Rector, Harry, for masterminding the technology so that slides, with background information about Nigeria, could be shown before the service.

Very many thanks to everyone who took part, and to all those who contributed towards, and helped serve, the splendid tea that followed.

Finally, thank you to the Christian women of Nigeria for preparing a service which was not only thought-provoking, but also joyful.

---

## Mothering Sunday Daffodils

There was extra activity in the Riddell Hall on fourth Soup Saturday of Lent! Many thanks to Penelope Dring and the willing volunteers, who prepared over eighty posies for Mothering Sunday. These were distributed to all ladies (and some men!) during the last hymn, at the Family Service, with others delivered later, to those unable to attend.



# Rascal Club

Sam Fountain

I love this time of year – the days getting longer, beautiful spring flowers, the promise of warmer weather to come. And then on Easter Day, seeing the church in all its glory, bursting into life after the solemnity of Lent. All of this makes me want to get outside and exercise, and in fact although January is traditionally the month when we're bombarded by content telling us this is the year we're going to get fit, I think spring is actually a better time to start (or restart) to exercise. Having been a member of The Rascal Club for four years now, I'm well placed to say that if you join you will have the BEST team helping you along on your fitness journey.

All the instructors are friendly and knowledgeable and will take time to find out all about you – current fitness level, old injuries, your lifestyle and what you want to achieve and will then recommend which classes to join in with to give you the greatest benefits. The classes are small and you will be able to take things at your own pace.

It's not like standard gyms where you might never actually speak to another person – at the Rascal Club you will be amazed at how quickly everyone knows your name and there's definitely no judgement going on. Other members will share your successes and keep you going if you're having a difficult day. Some will become friends – it's a real community, much like the church.

A good class for complete beginners is Clive's walk to run group, which starts on Tuesday 7th April, meeting at the Village Café at 12.00noon. It'll consist of walking or jogging 1km loops to the church and back. A mixture of walking and jogging, known as Jeffing after the man who invented it (who may have been called Jeff) is a perfect introduction to running. Great for bone strength, your heart and mental health. Bad knees? Join us in The Gym Hut first so we can rehab them.

One thing the Rascal Club instructors have taught me is that as you get older it's not about being fit for its own sake, it's about being fit for life, whether that's to carry your shopping more easily, run around after your grandchildren or being able to kneel (and get up again!).



Come and join in – and find out why so many of us have made the Rascal Club part of our lives. [www.TheRascalClub.co.uk](http://www.TheRascalClub.co.uk) or phone us on +44 7979 299851 to find out more.

## BREECH LANE COMMUNITY CENTRE

*run by Walton on the Hill Association*

Large hall with polished wooden floor, kitchen & toilet facilities, car park with ample parking

Mon - Ladies Yoga 7.30-8.30  
Wed - Art Group 1.30-4.30  
Wed - Exercise class 6.30-7.30  
Thurs - Pastel group - 1.30-4.00  
Thurs - Ladies Yoga 6-7 & 7.30-8.30

For bookings and hall hire costs please email:

[blccbookings@gmail.com](mailto:blccbookings@gmail.com) or

contact Debbie Murray on

Debbie 07711 080519

# Bullimores



Accountants for Life

**Tax • Accounts • Probate  
Inheritance Tax &  
Executorship**

T: 01306 880880

E: [partners@bullimores.co.uk](mailto:partners@bullimores.co.uk)

W: [www.bullimores.co.uk](http://www.bullimores.co.uk)

Bullimores LLP licensed to carry out the reserved legal activity of non-contentious probate in England & Wales by the ICAEW

# WALTON HEATH MANOR

## A BEAUTIFUL PLACE TO CALL HOME



Walton Heath Manor is a residential care home for older people and we are committed to promoting independence and diversity in personal choice. We understand the importance of personal preferences and aim always to respond in a manner which makes every individual feel valued and respected. Walton Heath Manor also offers short stay breaks for convalescence and respite care.

**For further information or to be sent a brochure please call us on**

# 01737 814010

**Walton Heath Manor, Hurst Drive, Walton-on-the-Hill, Surrey KT20 7QT**

email: [admin@whmanor.co.uk](mailto:admin@whmanor.co.uk)

[www.whmanor.co.uk](http://www.whmanor.co.uk)

# CHINTHURST

## School & Nursery

Co-educational school for children  
aged 2 1/2 to 11 years



**OPEN MORNING**

Wednesday 11 March

**EARLY YEARS**

**FUN MORNING**

Friday 20 March



[www.chinthurstschool.co.uk](http://www.chinthurstschool.co.uk)

Part of the Reigate Grammar School Family

# Well-being

Tracy Latham

## Fellow pilgrim

I want to protect you from the pain  
I want to stop the rain  
I want to make the sky blue  
If only you knew  
How much I want to.  
I might feel enough  
If I could do all this stuff!  
But life is often rough  
What can I do?

I can bear witness to your pain  
And let the sorrow drain.  
I can help you keep on going  
Even when we have no knowing  
What we might find  
As we wind  
Along the narrow road  
Less travelled.

I can contain your protest  
When you complain there is no  
rest  
And that it feels like a test  
And you are trying your best  
But you're losing your zest  
For life.

I can help you think it through,  
Help you explore the view,  
Help you to grow  
And think through what you sow.  
I can be a listening ear  
As you tell me what you fear.  
I can encourage you  
To find the courage to hold true  
To what you truly do  
Value.

I can stay present as we journey  
on  
Letting go and holding on;  
Letting go of the fears,  
The sadness and the tears.  
Letting go of the shame,  
The self recrimination and  
blame.  
Holding on to his hand,  
Savouring the good of this land  
Letting him be our guide.  
Wondering at all he does  
provide.  
Sharing the joys and the sorrows  
Trusting for our tomorrows.  
We are pilgrims.

# Pageant 2026

## 2026 Walton May Pageant **UNIFORMS** Saturday 16th May



*Procession starts 2pm from the Pond  
Front Cover by  
Olivia, yr. 4, Walton School*

**FREE PROGRAMME**  
\*\*\*\*\*  
Craft Stalls, Rides &  
Refreshments  
from  
11.30 am

# Creating Fabulous Gardens

*Hello! I'm Cindy Kirkland your Local & Qualified Garden Designer*

Landscape Design | Garden Makeovers | Tree Sourcing | Instant Hedge Sourcing  
Herbaceous Perennial & Shrub Sourcing | New Build Soft Landscaping | 3D CAD  
Drawings | Privacy Screening | Planting Plans | Onsite Planting



Scan here  
to view past projects



Lovely local  
client feedback

*"I have no hesitation in recommending Cindy/Creative Works. Her service was excellent. She and her team did a very good and efficient job planting up my new "mini woodland". She is very easy to work with. She communicated well and was responsive to any queries I raised. The team did a very neat job and left everything tidy. They completed the job on time and to budget" – Joan, Walton on the Hill*

**Creative  
Works**  
Creative Inspiration  
for living in style!

Call Cindy, to chat more about your  
own Garden Design project  
07976 449681  
[www.ckworks.net](http://www.ckworks.net)

# Professional Tree Care



Tree Surgery & Felling  
Hedge Cutting, Shrub Pruning  
Tree Inspections & Reports  
Stump Removal, Root Pruning  
Logs & Wood Mulch Suppliers  
All Workings Recycled

Call John Darter for a free quotation  
01737 812389

## Treemasters

[www.freemasters.co.uk](http://www.freemasters.co.uk)

## ORDER YOUR NHS PRESCRIPTIONS ONLINE



WITH OUR NEW MANAGE MY MEDS APP



- 1) FREE standard delivery when you order via our APP
- 2) Express same day delivery\*
- 3) Collect from your local pharmacy within 1 hour\*



APPLE APP  
STORE



Full details on our website  
[ShelversPharmacy.co.uk](http://ShelversPharmacy.co.uk)  
[WaltonPharmacy.co.uk](http://WaltonPharmacy.co.uk)

GOOGLE  
PLAY STORE



\* Subject to stock levels, further Terms and Conditions apply, please call the pharmacy for further details

# Congratulations to Katie & Tom!



A huge congratulations to the beautiful bride and groom, Katie and Tom, who exchanged vows and were married in December at St Peter's Church. From everyone at St Peter's, may your marriage be truly blessed.





MICHAEL  
EVERETT & Co.

A moving experience...

WALTON ON THE HILL OFFICE  
Regency House, 61 Walton Street  
Walton on the Hill Surrey  
KT20 7RZ

01737 814877

[walton@michael-  
everett.co.uk](mailto:walton@michael-everett.co.uk)